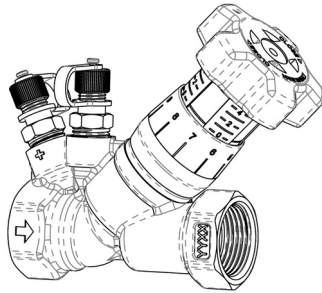


1 Quick-reference Operating Manual

1.1 BOA-Control SBV



1.1.1 General

This quick-reference operating manual supplements the installation/operating manual. All information given in the installation/operating manual must be observed.

Table 1: Relevant operating manuals

Type series	Reference number of the installation/operating manual
BOA-Control SBV	7130.8

1.1.2 Installation information

When installing the product in a piping system, observe the following points:

- Ensure the valves and piping are clean and do not contain any foreign matter.
- Ensure the flow through the valves is in the direction indicated by the embossed flow direction arrow.
- Minimum upstream stabilisation distance: 5x DN upstream of the valve (10x DN downstream of a pump)
- Minimum downstream stabilisation distance: 2x DN downstream of the valve
- If the fluid handled is clean, the valve can be installed in any position in the system. If the fluid handled contains particles, the valve must not be installed with the handwheel pointing downwards.
- Install the valves so that they are not exposed to mechanical stress.

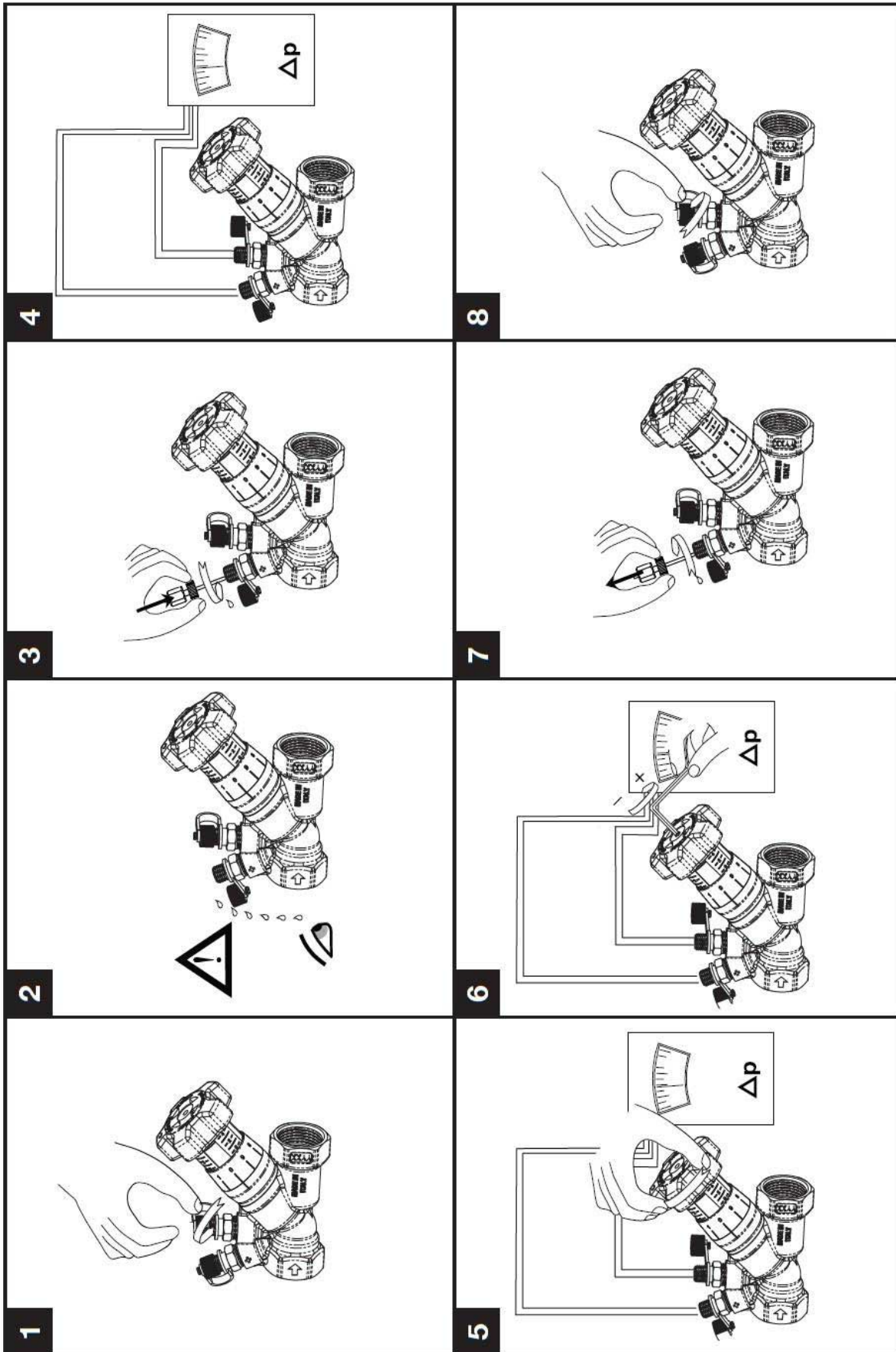
1.1.3 Operation

The valves are designed for balancing and shutting off volume flows. The handwheel scale indicates the valve travel position. In position 4.0, the valve is fully open. In position 0.0, the valve is fully closed. The moving part of the scale indicates the number of full turns. The fixed part of the scale indicates tenths of a full turn. The valves have a travel stop that can be set anywhere between position 4.0 and position 0.0 using an Allen key (WAF 3).

1.1.4 Taking measurements

In combination with a measuring computer, the valves determine the volume flow rate by measuring the pressure drop across a fixed orifice. The valves are equipped with two pressure measurement connection branches that are designed for the insertion of 3-mm probes. Take measurements in accordance with (⇒ Section 1.1.5, Page 2) .

1.1.5 Taking measurements (illustrated instructions)





KSB SE & Co. KGaA

Johann-Klein-Straße 9 • 67227 Frankenthal (Germany)

Tel. +49 6233 86-0

www.ksb.com

7130.81-EN