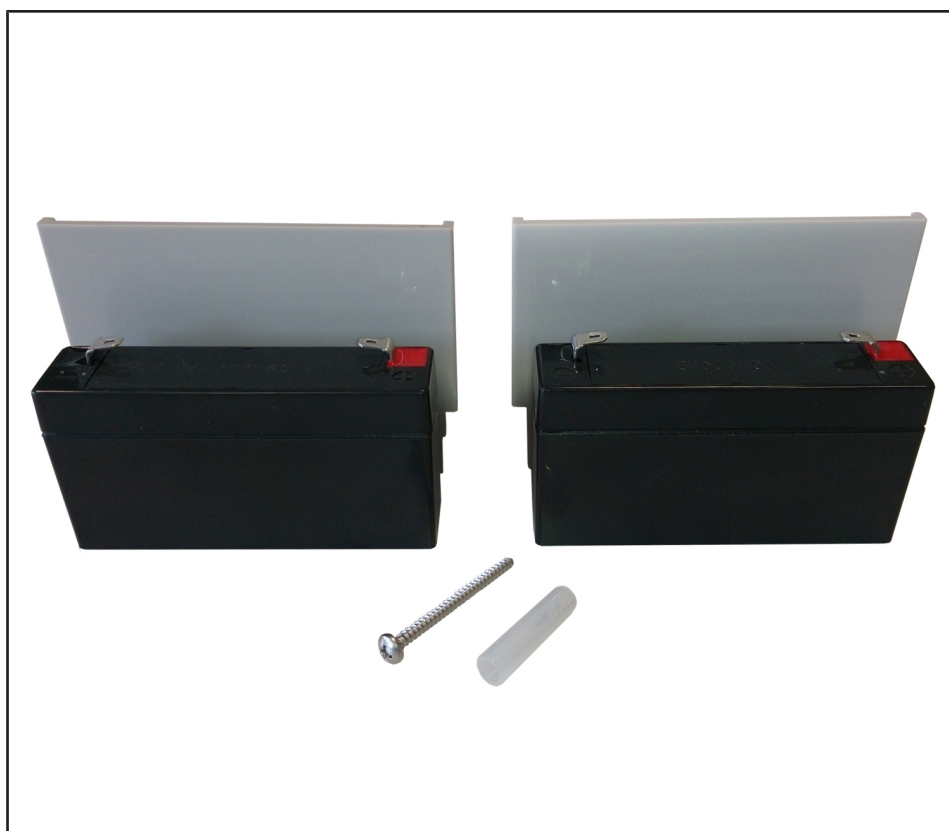


Level Control Unit

## LevelControl Basic 2

Rechargeable Battery Replacement Set for BC Type

### Supplementary Operating Manual



## **Legal information/Copyright**

Supplementary Operating Manual LevelControl Basic 2

Original operating manual

All rights reserved. The contents provided herein must neither be distributed, copied, reproduced, edited or processed for any other purpose, nor otherwise transmitted, published or made available to a third party without the manufacturer's express written consent.

Subject to technical modification without prior notice.





## 1 General

This supplementary operating manual accompanies the installation/operating manual. All information contained in the installation/operating manual must be observed.

**Table 1:** Relevant operating manuals

Type series	Reference number of the installation/operating manual
LevelControl Basic 2	4041.80

### 1.1 General information/safety regulations

	<div style="background-color: #e67e22; color: white; padding: 5px;"><b>⚠ DANGER</b></div> <p><b>Improper connection of the rechargeable battery</b> Danger to life!</p> <ul style="list-style-type: none"> <li>▷ Ensure correct polarity when connecting the printed circuit board.</li> <li>▷ Ensure correct polarity when connecting the rechargeable battery.</li> <li>▷ After installing the rechargeable battery, verify the correct function of the device in mains-independent, i.e. battery, mode.</li> </ul>
	<div style="background-color: #e67e22; color: white; padding: 5px;"><b>⚠ DANGER</b></div> <p><b>Improper handling of the rechargeable battery</b> Danger to life!</p> <ul style="list-style-type: none"> <li>▷ Do not expose the rechargeable battery to high temperatures.</li> <li>▷ Do not throw the rechargeable battery into a fire. Explosion hazard!</li> <li>▷ Do not open and/or technically modify the rechargeable battery.</li> <li>▷ Protect the rechargeable battery from moisture.</li> <li>▷ Do not use the rechargeable battery if the housing or the contacts have been damaged.</li> <li>▷ Observe any safety information printed on the rechargeable battery.</li> </ul>
	<div style="background-color: #e67e22; color: white; padding: 5px;"><b>⚠ DANGER</b></div> <p><b>Improper installation/replacement of the rechargeable battery</b> Danger to life!</p> <ul style="list-style-type: none"> <li>▷ Only qualified electrical experts (or persons who have been given proper instruction in accordance with VDE 0100 requirements) may install/replace the rechargeable battery.</li> <li>▷ Only install the rechargeable battery when the control unit is de-energised.</li> <li>▷ Do not short-circuit the rechargeable battery.</li> </ul>
	<div style="background-color: #2980b9; color: white; padding: 5px;"><b>NOTE</b></div> <p>The rechargeable batteries must be replaced every five years to ensure that the control unit will operate reliably in battery mode. Use original spare parts only.</p>

Observe the following points when disposing of rechargeable batteries:

- Separate and sort the individual components of the packaging and dispose of them accordingly.
- Observe the generally applicable disposal directives and battery legislation (such as the German Battery Act (BattG), etc.).
- Rechargeable batteries must not be thrown in with the general household waste, but instead in a dedicated collecting bin.

### 1.2 Preparing the control unit

1. Disconnect the control unit from the power supply.
2. Undo the 6 hexagon socket head cap screws on the surface of the control unit and open the housing.

### 1.3 Replacing the rechargeable battery

#### 1.3.1 Removing the rechargeable battery

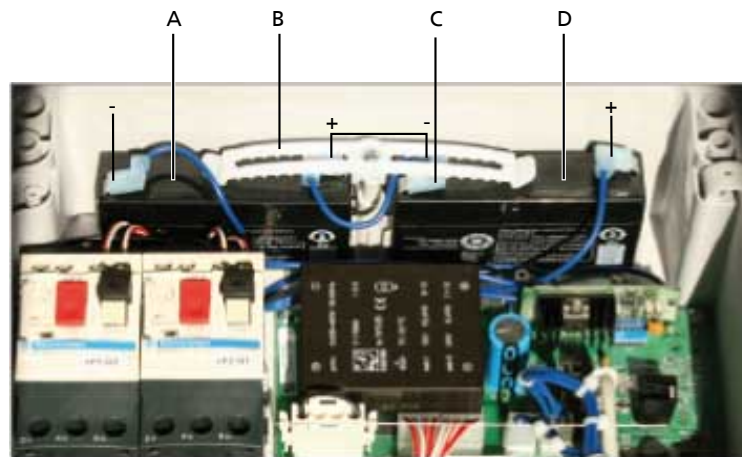


Fig. 1: Removing the rechargeable battery

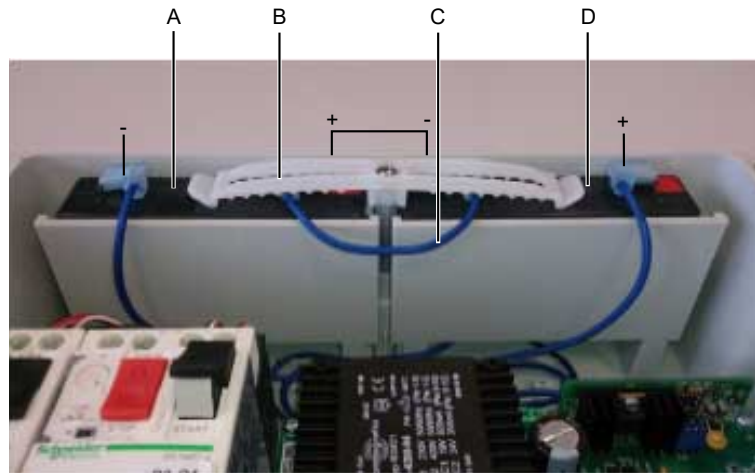
A	Rechargeable battery	C	Prefabricated connection
B	Clamp	D	Rechargeable battery

✓ Control unit is correctly prepared. (⇒ Section 1.2, Page 4)

1. Remove the power cables from the outer poles of the rechargeable batteries.
2. Undo the screw of the clamp (B).
3. Remove the prefabricated connection (C) from the inner poles of the rechargeable batteries.
4. Remove the rechargeable batteries (A, D).

### 1.3.2 Installing the rechargeable battery

	<b>NOTE</b>
	The rechargeable battery reaches its maximum capacity after approximately 11 hours of continuous charging.



**Fig. 2:** Installing the rechargeable battery

A	Rechargeable battery	C	Prefabricated connection
B	Clamp, screw and spacer (supplied)	D	Rechargeable battery

1. Insert the adapter and rechargeable batteries (A, D) in the designated position. Observe the marking at the bottom of the housing ("+" and "-").
2. Using the prefabricated connection (C), connect the inner poles of the rechargeable batteries in series.
3. Lock the rechargeable batteries in place using the enclosed clamp (B) and screw incl. spacer sleeve (supplied).
4. Connect the power cables to the outer poles of the rechargeable batteries. Ensure correct polarity.

### 1.4 Making ready for operation

	<b>NOTE</b>
	Carry out a functional test to verify the integrity of the signalling/message functions during a power failure. The rechargeable batteries are sufficiently pre-charged to function test the control unit.

1. Mount the housing cover and tighten it hand-tight using the 6 hexagon socket head cap screws.
2. Connect the power supply.
3. Disconnect the control unit from the power supply and carry out a function test in battery mode.
  - ⇒ If the display extinguishes, open the control unit and verify the correct position of the charge controller and connections. Correct if necessary.
  - ⇒ When the control unit visually and acoustically signals a power failure, the function test is complete.
4. Connect the power supply.







**KSB SE & Co. KGaA**

Johann-Klein-Straße 9 • 67227 Frankenthal (Germany)

Tel. +49 6233 86-0

[www.ksb.com](http://www.ksb.com)