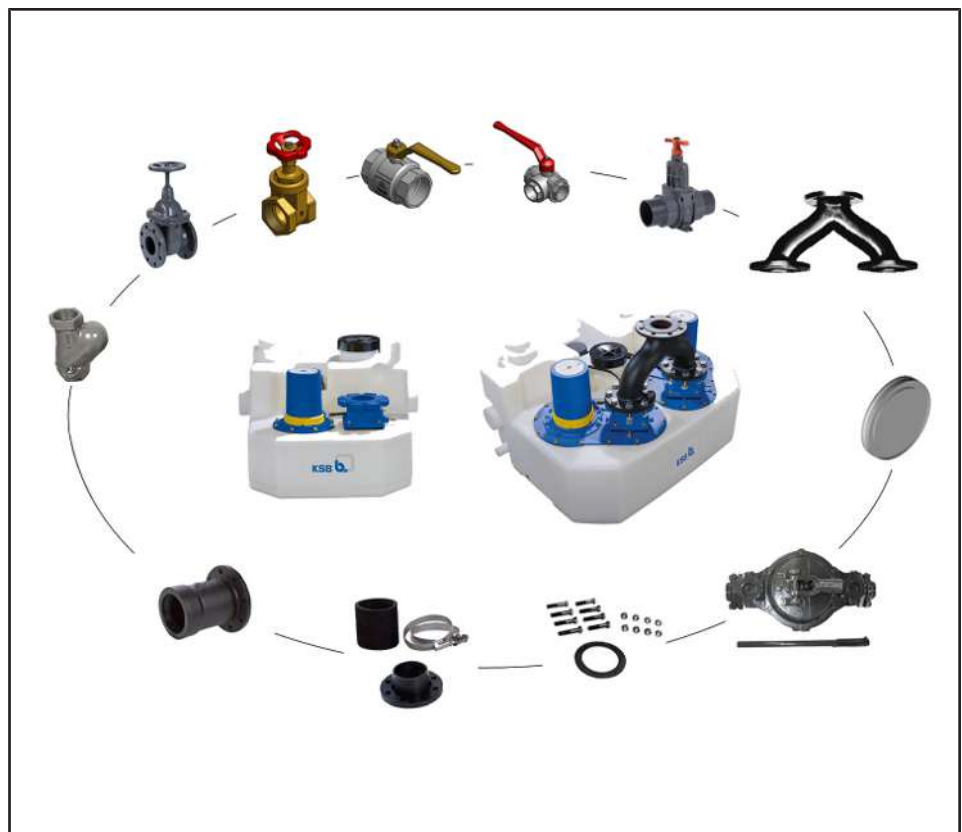


Floodable Sewage Lifting Unit

Compacta / MiniCompacta

Accessories

Type Series Booklet



Legal information/Copyright

Type Series Booklet Compacta / MiniCompacta

All rights reserved. The contents provided herein must neither be distributed, copied, reproduced, edited or processed for any other purpose, nor otherwise transmitted, published or made available to a third party without the manufacturer's express written consent.

Subject to technical modification without prior notice.

© KSB SE & Co. KGaA, Frankenthal 2023-03-29

Contents

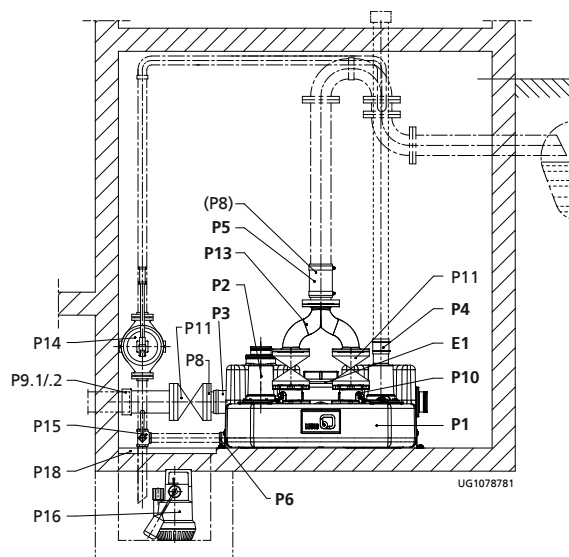
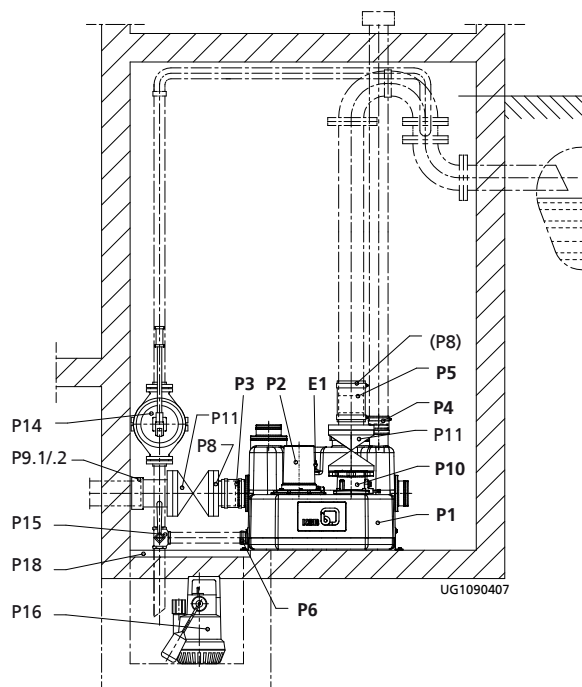
Building Services: Drainage.....	4
Floodable Sewage Lifting Units	4
MiniCompacta / Compacta	4
Accessories.....	4
P3 - Flexible hose connection (inlet)	7
P5 - Flexible hose connection (discharge side)	8
P8 - Double-flanged taper	9
P9.1 - Flanged socket	11
P10 - RK swing check valve, PN 4	12
P10 - Swing check valve, PN 16.....	13
P10 - Lift check valve, PN 10	15
P11 - Socket gate valve CuZn, PN 16	16
P11 - Ball valve, CuZn, PN 16	17
P11 - Flanged ball valve, stainless steel, PN 16	18
P11 - PVC gate valve.....	19
P11 - Gate valve to KSB's choice.....	20
P12 - Installation accessories.....	21
P13 - Y-pipes	22
P13.1 - GG transition flange	23
P14 - Hand diaphragm pump	24
P15 - Three-way plug valve.....	25
P20 - Blind flange	26
Package offer for any spare parts required during 10 years' operation	27

Building Services: Drainage

Floodable Sewage Lifting Units

MiniCompacta / Compacta

Accessories



i For redundant drainage pumps (P16) see AmaDrainer N and AmaDrainer 4../5.. type series.

Table 1: Symbols key

Symbol	Description
L	Included in the scope of supply
X	Available as accessory
-	Not available

Table 2: System accessories

Item	Description		MiniCompacta						Compacta								Mat. No.	[kg]	
			U60	U100	UZ150	US40	US100	US150	U100	U300	UZ150	UZ300	UZ3.-5.450	UZ3.-5.900	UZ10-15.450	UZ10.+11.900			UZ12.-15.900
P3	Flexible hose connection (inlet)	DN 50	X	-	X	X	-	X	-	-	X	-	-	-	-	-	-	18040370	0,2
		DN 100	L	L	L	-	L	L	L	X	L	X	-	-	-	-	-	18040203	0,4
		DN 150	-	X	X	-	X	X	X	L	X	L	L	L	L	L	L	18040338	0,7
		DN 200	-	-	-	-	-	-	-	X	-	X	X	X	X	X	X	18040972	0,7
P5	Flexible hose connection (discharge side)	DN 32	-	-	-	X	X	X	-	-	-	-	-	-	-	-	-	18040329	0,6
		DN 50	-	-	-	-	X	X	-	-	-	-	-	-	-	-	-	18040330	0,6
		DN 80/65 ¹⁾	X	X	X	-	-	-	-	-	-	-	-	-	-	-	-	19074057	4,8
		DN 80/80	X	X	X	-	-	-	X	X	X	X	X	-	-	-	-	19070679	5,2
		DN 80/100	L	L	L	-	-	-	L	L	L	L	L	L	-	-	-	18041615	1,3
		DN 100/100	-	-	-	-	-	-	-	-	-	-	-	-	L	L	L	18041616	5,4
P8	Stub flange	DN 65/65 ¹⁾	X	X	X	-	-	-	-	-	-	-	-	-	-	-	19074058	3,8	

¹ For the UK only

Item	Description		MiniCompacta						Compacta								Mat. No.	[kg]
			U60	U100	UZ150	US40	US100	UZS150	U100	U300	UZ150	UZ300	UZ3-5.450	UZ3-5.900	UZ10-15.450	UZ10-15.900		
P8	Stub flange	DN 80/100	X	X	X	-	-	-	X	X	X	X	X	-	-	-	18040303	0,4
		DN 100/100	X	X	X	-	X	X	X	X	X	X	X	-	-	-	19075270	4,5
		DN 150/150	-	X	X	-	X	X	X	X	X	X	X	X	X	X	19075269	9,1
		DN 200/200	-	-	-	-	-	-	-	X	-	X	X	X	X	X	19075271	12,3
P9.1	Flanged socket	DN 100	X	X	X	X	X	X	X	X	X	X	-	-	-	-	00262135	9,5
		DN 150	-	X	X	-	X	X	X	X	X	X	X	X	X	X	01020844	14,5
		DN 200	-	-	-	-	-	-	-	X	-	X	X	X	X	X	00263071	18,5
P10	RK swing check valve, PN 4	Rp 1 1/4	-	-	-	-	X	X	-	-	-	-	-	-	-	-	01009771	0,1
		Rp 2	-	-	-	-	X	X	-	-	-	-	-	-	-	-	01009773	0,5
P10	Ball check valve, PN 10	G 1 1/4	-	-	-	-	X	X	-	-	-	-	-	-	-	-	01120610	0,9
		G 2	-	-	-	-	X	X	-	-	-	-	-	-	-	-	01036090	2,835
P10	Swing check valve, PN 16	DN 80 ²⁾	-	-	-	-	-	-	-	-	-	-	-	-	-	-	48829254	16,5
		DN 100	-	-	-	-	-	-	-	-	-	-	-	-	X	X	48829255	20,9
		DN 150 ³⁾	-	-	-	-	-	-	-	-	-	-	-	-	-	-	48829256	60
P11	Socket gate valve	Rp 1 1/4	-	-	-	X	X	X	-	-	-	-	-	-	-	-	01014219	0,627
		Rp 2	-	-	-	-	X	X	-	-	-	-	-	-	-	-	00411503	1,287
P11	Ball valve	Rp 1 1/4	-	-	-	X	X	X	-	-	-	-	-	-	-	-	01120607	0,572
		Rp 2	-	-	-	-	X	X	-	-	-	-	-	-	-	-	01050382	1,238
P11 ³⁾	Flanged ball valve, stainless steel 1.4408	DN 80	X	X	X	-	-	-	X	X	X	X	X	X	-	-	01723156	18,8
		DN 100	X	X	X	-	-	-	X	X	X	X	-	-	X	X	01723239	35
P11	Gate valve, PN 1	DN 100	X	X	X	X	X	X	X	X	X	X	-	-	-	-	01121715	3,5
		DN 150	-	X	X	-	X	X	X	X	X	X	X	X	X	X	01121714	9,2
		DN 200	-	-	-	-	-	-	-	X	-	X	X	X	X	X	01506896	13,4
P11	Gate valve to KSB's choice, PN 10	DN 65	X	X	X	-	-	-	X	X	X	X	X	X	-	-	01056707	17
		DN 80	X	X	X	-	-	-	X	X	X	X	X	X	-	-	01056708	18,9
		DN 100	X	X	X	X	X	X	X	X	X	X	X	X	X	X	01056709	22,5
		DN 150	-	X	X	-	X	X	X	X	X	X	X	X	X	X	01056710	42,7
		DN 200	-	-	-	-	-	-	-	X	-	X	X	X	X	X	01132653	61,5
P12	Set of installation accessories	DN 80	X	X	X	-	-	-	X	X	X	X	X	X	-	-	18072644	1
		DN 100	X	X	X	X	X	X	X	X	X	X	X	X	X	X	18060163	1,4
		DN 150	-	X	X	-	X	X	X	X	X	X	X	X	X	X	18076348	2
		DN 200	-	-	-	-	-	-	-	X	-	X	X	X	X	X	18040967	4,2
P13	Y-pipe Galvanised steel, with union nuts	DN 50	-	-	-	-	-	X	-	-	-	-	-	-	-	-	01121711	8,5
P13	Y-pipe Grey cast iron, including installation accessories	DN 80	-	-	L	-	-	-	-	-	L	L	X	-	-	-	18040966	8
P13	Y-pipe Galvanised steel, including installation accessories Steel, A = 525 mm	DN 100	-	-	-	-	-	-	-	-	-	-	-	X	X	-	18040252	15,6
P13	Y-pipe Galvanised steel, including installation accessories Steel, A = 570 mm	DN 100	-	-	-	-	-	-	-	-	-	-	-	-	-	X	18040911	15,5
P13	Y-pipe Including installation accessories Grey cast iron with high-quality coating (Rilsan®)	DN 80	-	-	X ³⁾	-	-	-	-	-	X ³⁾	X ³⁾	X ³⁾	-	-	-	18041115	8

² for Compacta UZ, ZF, ZK

³ Only for variant C

Item	Description		MiniCompacta						Compacta								Mat. No.	[kg]	
			U60	U100	UZ150	US40	US100	UZS150	U100	U300	UZ150	UZ300	UZ3.-5.450	UZ3.-5.900	UZ10-15.450	UZ10.-+11.900			UZ12.-15.900
P13	Y-pipe Including installation accessories Stainless steel (1.4571), A = 525 mm	DN 100	-	-	-	-	-	-	-	-	-	-	-	✗	-	-	-	18041287	15,6
P13.1	Adapter flange	DN 100/150	-	-	-	-	-	-	-	-	-	-	-	-	✗	✗	✗	01134592	12
P14	Hand diaphragm pump	Rp 1 1/2	✗	✗	✗	✗	✗	✗	✗	✗	✗	✗	✗	✗	✗	✗	✗	00520485	12
P15	Three-way plug valve	Rp 1 1/2	✗	✗	✗	✗	✗	✗	✗	✗	✗	✗	✗	✗	✗	✗	✗	19053063	1,5
P20	Blind flange	-	✗	✗	✗	-	-	-	-	-	-	-	-	-	-	-	-	18040964	3,8
		-	-	-	-	✗	✗	✗	✗	✗	✗	✗	✗	-	-	-	18040965	3,8	
		-	-	-	-	✗	-	-	-	-	-	-	-	-	-	-	18041731	3,8	
		-	-	-	-	-	-	-	-	-	-	-	-	-	-	✗	18040353	10,4	
		-	-	-	-	-	✗	✗	✗	✗	✗	✗	-	-	-	-	-	18041087	1,2
-	Package offer for any spare parts required during 10 years' operation, single pump	-	✗	✗	-	✗	✗	-	-	-	-	-	-	-	-	-	-	18040943	-

P3 - Flexible hose connection (inlet)



Fig. 1: Flexible hose connection (inlet)

In accordance with EN 12050-1, flexible, vibration-damping connections must be used for all hydraulic connections on the inlet side and discharge side of sewage lifting units.

Connection sets for the inlet side comprise:

- Various cross-sections
- Flexible hose connection
- Fitting hose clips

Available versions

Table 3: Available versions of flexible hose connections (inlet)

Description	Mat. No.
Flexible hose connection (inlet) For inlet line, with fabric-reinforced hose and two hose clips, DN 50	18040370
Flexible hose connection for inlet line, with fabric-reinforced hose and two hose clips, DN 100	18040203
Flexible hose connection For inlet line, with fabric-reinforced hose and two hose clips, DN 150	18040338
Flexible hose connection for inlet line, with fabric-reinforced hose and two hose clips, DN 200	18040972

Scope of supply

Standard scope of supply U60, U(S)100 and UZ(S)150:

Connection set for inlet DN 100 included

Standard scope of supply U300, UZ300:

Connection set for inlet DN 150 included

Technical data

Table 4: Technical data of the flexible hose connection (inlet)

Description	DN 50	DN 100	DN 150	DN 200
Fabric-reinforced hose	60 × 4,5 × 50 mm	110 × 4 × 100 mm	162 × 5 × 120 mm	203 × 3 × 200 mm
Hose clip	50 - 70 × 13 mm	110 - 130 × 13 mm	160 - 180 × 13 mm	210 - 230 × 13 mm

P5 - Flexible hose connection (discharge side)



Fig. 2: Flexible hose connection (discharge side)

In accordance with EN 12050-1, flexible, vibration-damping connections must be used for all hydraulic connections on the inlet side and discharge side of sewage lifting units.

Connection sets for the discharge side comprise:

- Various cross-sections
- Flexible hose connection
- Fitting hose clips
- Double-flanged taper

Available versions

Table 5: Available versions of flexible hose connections (discharge side)

Description	Mat. No.
Flexible hose connection (discharge side) For discharge line, with fabric-reinforced hose, hose clips and hexagon nipple, DN 32	18040329
Flexible hose connection For discharge line, comprises fabric-reinforced hose, adapter hose, hose clips and hexagon nipple, DN 50	18040330
Flexible hose connection (discharge side) For discharge line, comprises fabric-reinforced hose, reducing nipple, connecting pipe, threatec flange DN 80 and hose clips, DN 80/65	19074057
Flexible hose connection (discharge side) For discharge line, with fabric-reinforced hose, adapter hose, stub flange made of steel, and hose clips, DN 80/80. The adapter hose can be used for connecting pipes of outside diameters ranging from 83 to 90 mm.	19070679
Flexible hose connection for discharge line, comprising fabric-reinforced hose, adapter hose, stub flange and hose clips, DN 80/100 The adapter hose can be used for connecting pipes of outside diameters ranging from 108 - 114.3 mm.	18041615
Flexible hose connection for discharge line, comprising fabric-reinforced hose, adapter hose, stub flange and hose clips, DN 100/100 The adapter hose can be used for connecting pipes of outside diameters ranging from 108 - 114.3 mm.	18041616

Scope of supply

Standard scope of supply U60, U100, U300, UZ150, UZ300, UZ3. to UZ5.450 and UZ3. to UZ5.500:
Flexible hose connections DN 80/100 included.

Standard scope of supply UZ10. to UZ15.450 and UZ10. to UZ15.900:
Flexible hose connections DN 100/100 included.

Technical data

Table 6: Technical data of the flexible hose connection (discharge side)

Description	DN 32	DN 50	DN 80/65	DN 80 / 80	DN 80 / 100	DN 100 / 100
Fabric-reinforced hose	42 × 4 × 120 mm	60 × 5 × 90 mm	75 × 5 × 150 mm	90 × 6 × 200 mm	115 × 6 × 200 mm	115 × 6 × 200 mm
Adapter hose	-	-	-	81 × 5 × 50 mm	108 × 3 × 60 mm	108 × 3 × 60 mm
Hose clip	50 × 20 mm	70 × 25 mm	70 - 90 × 13 mm	100 × 25 mm	126 × 25 mm	126 × 25 mm
Double-flanged taper	Hexagon nipple: R 1 1/4 × 150 mm Material: S185+Z	Hexagon nipple: R 2 × 60 mm Material: A4	R 2 1/2 × 50 mm on flange DN 80, PN 16 Material: steel, A4	Material: steel	Material: PP	Material: steel

P8 - Double-flanged taper



Double-flanged taper for connecting flanged pipes to the inlet side (e.g. if a flanged inlet-side gate valve is fitted in addition) or for connecting plain-end pipes to the discharge side of sewage lifting units (connection sets P5 can also be used).

Available versions

Table 7: Available versions of double-flanged tapers

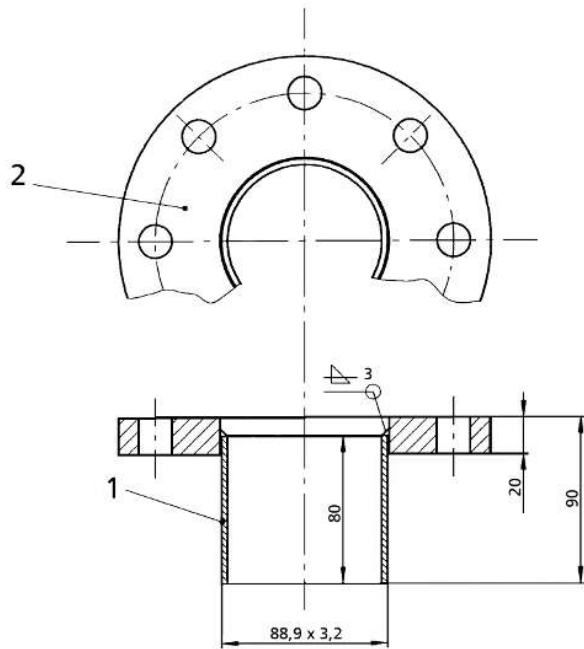
Description	Mat. No.
Stub flange, DN 65/65 (not illustrated)	19074058
Double-flanged taper, DN 80/100	18040303
Double-flanged taper, DN 100/100	19075270
Double-flanged taper, DN 150/150	19075269
Double-flanged taper, DN 200/200	19075271

Technical data

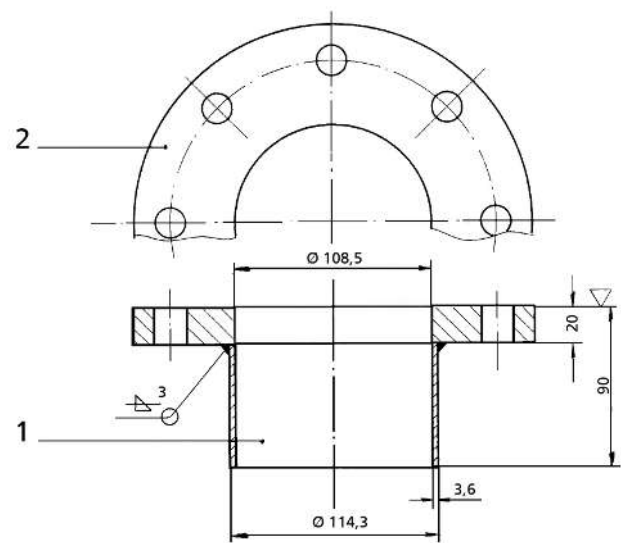
Table 8: Technical data of the double-flanged taper

Feature	DN 65	DN 80 / 100	DN 100/100	DN 150 / 150	DN 200 / 200
Material	Steel	PP	Steel	Steel	Steel
Flange / bolt hole pattern to EN 1092-1/2	PN 10 / 16	PN 10 / 16	PN 10 / 16	PN 10 / 16	PN 10

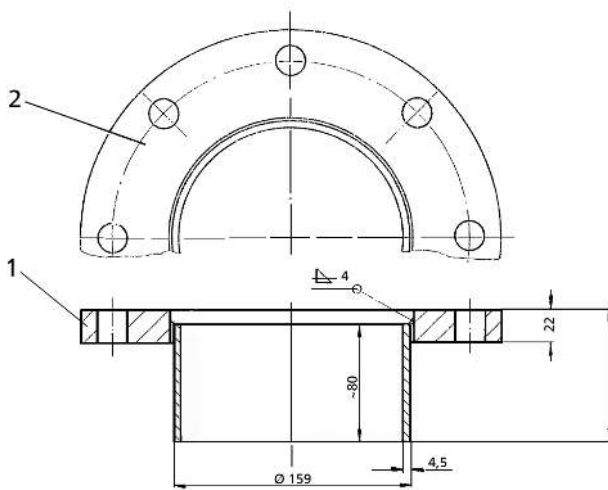
Dimensions



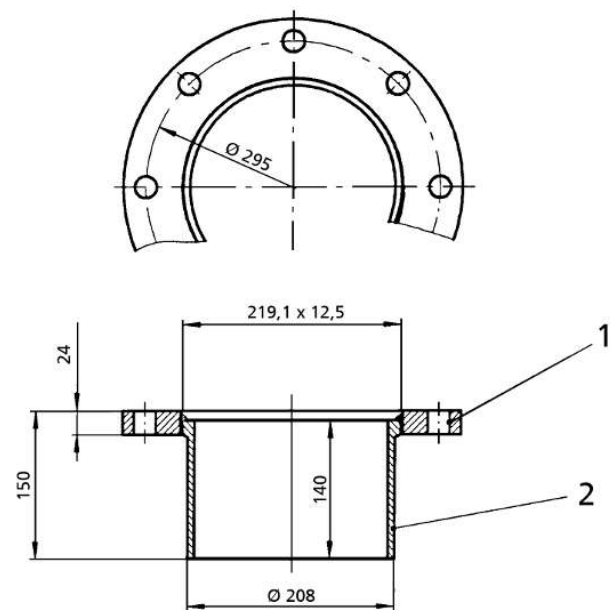
DN 80 / 100



DN 100/100



DN 150 / 150



DN 200 / 200

1	Pipe	2	Flange
---	------	---	--------

P9.1 - Flanged socket



Flanged socket made of grey cast iron for connecting pipes made of ductile cast iron to the inlet side of sewage lifting units (e.g. if a flanged inlet-side gate valve is used). The pipe to be connected is fitted with an O-ring and inserted into the flanged socket.

Available versions

Table 9: Available versions of flanged sockets

Description	Mat. No.
Flanged socket DN 100 for outside pipe diameter of 118 mm	00262135
Flanged socket DN 150 for outside pipe diameter of 170 mm	01020844
Flanged socket DN 200 for outside pipe diameter of 222 mm	00263071

Technical data

Table 10: Technical data of the flanged socket

Feature	Value
Design	To DIN 28622
Material	Grey cast iron
Flange pattern	PN 10 / 16, to EN 1092-1/2 ⁴⁾

⁴ DN 200 drilled to PN 10

P10 - RK swing check valve, PN 4



For discharge pipes with a nominal diameter < DN 80 it is generally recommended (and stipulated by law in Germany!) that sewage lifting units be fitted with a cutter (e.g. for refurbished buildings).

The standard scope of supply of sewage lifting units with a cutter does not include any discharge-side lift check valves in order to allow for a flexible choice of discharge side connections matching the installation conditions. If lift check valves are required, they are available as accessories, e.g. swing check valves.

Available versions

Table 11: Available versions of RK swing check valves

Description	Mat. No.
RK swing check valve, Rp 1 1/4	01009771
RK swing check valve, Rp 2	01009773

Technical data

Table 12: Technical data of the RK swing check valve

Feature	Value
Design	To CE EN 12050-4, with full port and drain plug
Material	Plastic
Connection	Internal/internal thread ISO 7/1

Dimensions

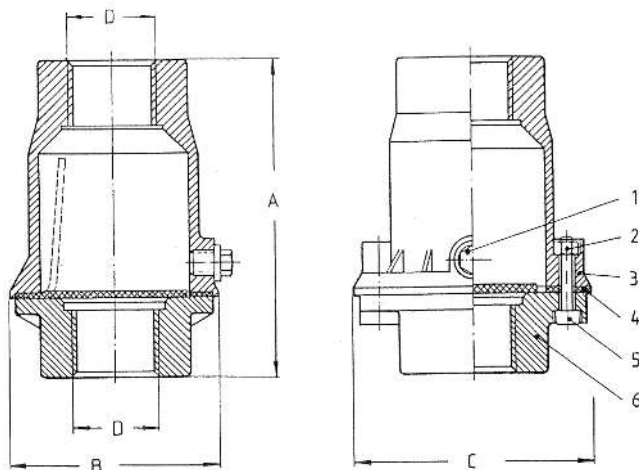


Fig. 3: Dimensions of swing check valves RK 32 and 50

Table 13: Dimensions of the ball check valve

Swing check valve	A	B	C	D
	[mm]	[mm]	[mm]	
RK 32	90	70	90	Rp 1 1/4
RK 50	160	105	121	Rp 2

P10 - Swing check valve, PN 16



The standard scope of supply of all single-pump and dual-pump sewage lifting units with free-flow impellers F1 to F5 includes the required swing check valve(s) in DN 80.

To keep the choice of discharge-side piping for large Compacta lifting units with F10 to F15 impellers as flexible as possible, the scope of supply of these sewage lifting units does not include a swing check valve.

If suitable swing check valves are required for these models, they can be selected in DN 100 from the available accessories.

Available versions

Table 14: Available versions of swing check valves

Description	Mat. No.
Swing check valve, DN 80	48829254
Swing check valve, DN 100	48829255
Swing check valve, DN 150	48829256

Technical data

Table 15: Technical data of the swing check valve

Feature	Value
Design	To CE EN 12050-4, with full port, lifting device with wing screw
Material	Grey cast iron
Flange pattern	PN 10 / 16, drilled to EN 1092-1/2

Dimensions

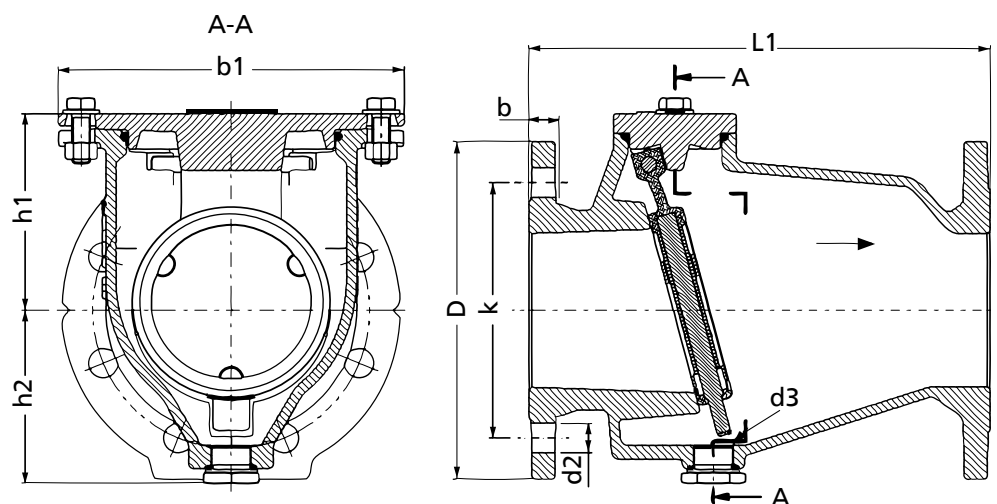


Fig. 4: Dimensions of the swing check valves

Table 16: Dimensions of the swing check valves

DN	D [mm]	b [mm]	b1 [mm]	d2 [mm]	h1 [mm]	h2 [mm]	k [mm]	L1 [mm]	No. of bolt holes
80	200	19	200	19	125	100	160	260	8
100	220	19	225	19	138	113	180	300	8
150	285	19	340	23	193	148	240	400	8

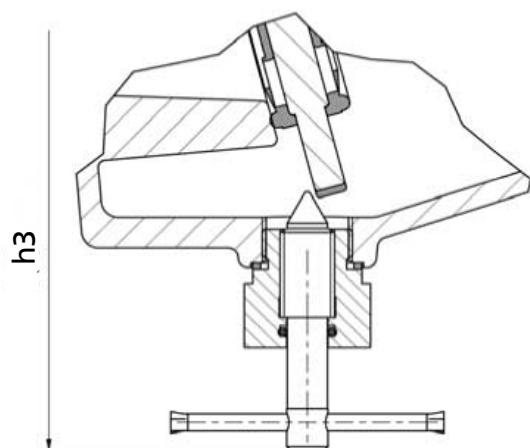


Fig. 5: Dimensions of the lifting device

h3	Distance to the valve centre: 152 mm
----	--------------------------------------

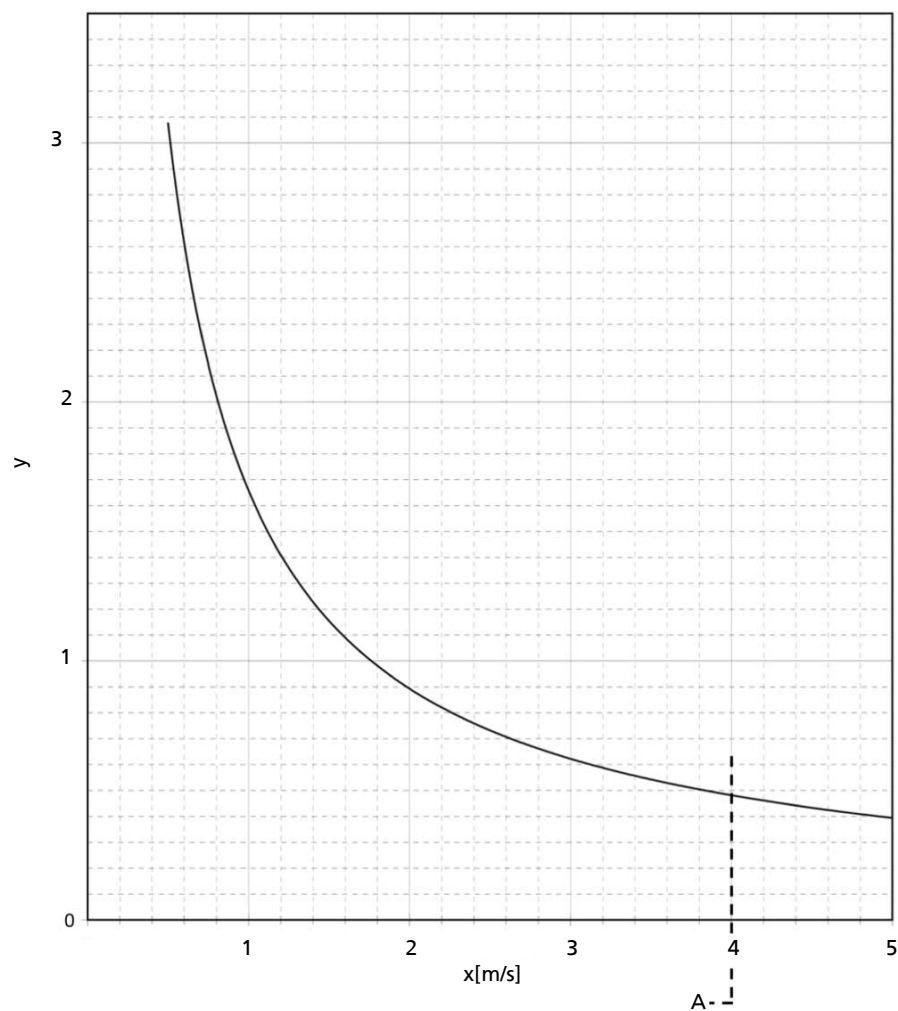


Fig. 6: Loss coefficient

A	Operating limit
x	Flow velocity [m/s]
y	Loss coefficient ζ

P10 - Lift check valve, PN 10



For discharge pipes with a nominal diameter < DN 80 it is generally recommended (and stipulated by law in Germany!) that sewage lifting units be fitted with a cutter (e.g. for refurbished buildings).

The standard scope of supply of sewage lifting units with a cutter does not include any discharge-side non-return valves in order to allow for a flexible choice of discharge side connections matching the installation conditions. If non-return valves are required, they are available as accessories, e.g. ball check valves.

Available versions

Table 17: Available versions of swing check valves

Description	Mat. No.
Ball check valve, G 1 1/4	01120610
Ball check valve, G 2	01036090

Technical data

Table 18: Technical data of the lift check valve

Feature	Value
Design	To CE EN 12050-4, with full port
Material	Grey cast iron
Max. pressure load	PN 10

Dimensions

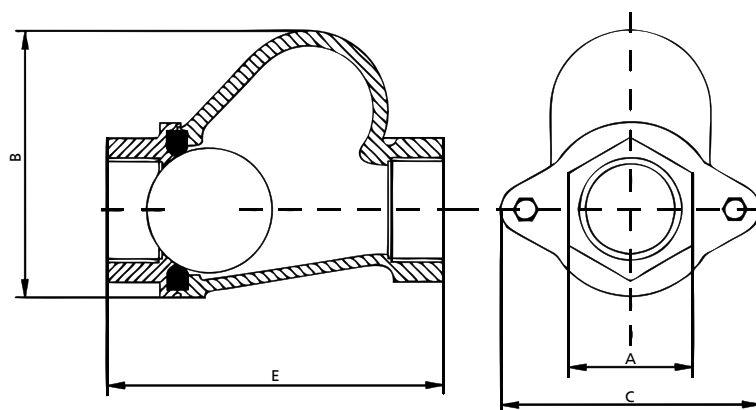


Fig. 7: Dimensions of the ball check valve

Table 19: Dimensions of the ball check valve

Lift check valve	A	B	C	E
	[mm]	[mm]	[mm]	[mm]
G 1 1/4	50	107	105	135
G 2	70	140	132	175

Loss coefficients

Table 20: Loss coefficients of the ball check valve

Lift check valve	Loss coefficient
G 1 1/4	2,5
G 2	2,0

P11 - Socket gate valve CuZn, PN 16



To be able to disconnect the sewage lifting unit from the discharge pipe in the event of a fault or for any maintenance work, it is recommended to install a discharge-side gate valve to prevent the content of the discharge pipe from flowing back to the sewage lifting unit (also see EN 12056-4).

Socket gate valves made of brass (CuZn) are especially suited for small sewage lifting units with a cutter and discharge pipes with a small nominal diameter (DN 32 / DN 50).

Available versions

Table 21: Available versions of socket gate valves

Description	Mat. No.
Socket gate valve, Rp 1 1/4	01014219
Socket gate valve, CuZn, PN 10-12 DIN 3352, Rp 2	00411503

Technical data

Table 22: Technical data of the socket gate valve

Feature	Value
Design	Internal/internal thread and full port
Material	Brass (CuZn)
Material of the sealing element	PTFE
Max. pressure load	PN 16

Dimensions

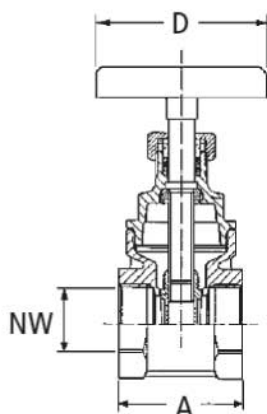


Fig. 8: Dimensions of the socket gate valve

Table 23: Dimensions of the socket gate valve

Socket gate valve	NW (nom. diameter)	A	D
	[mm]	[mm]	[mm]
Rp 1 1/4	46	52	70
Rp 2	65	61	70

P11 - Ball valve, CuZn, PN 16



To be able to disconnect the sewage lifting unit from the discharge pipe in the event of a fault or for any maintenance work, it is recommended to install a discharge-side ball valve to prevent the content of the discharge pipe from flowing back to the sewage lifting unit (also see EN 12056-4).

Ball valves made of brass (CuZn) are especially suited for small sewage lifting units with a cutter and discharge pipes with a small nominal diameter (DN 32 / DN 50).

Available versions

Table 24: Available versions of ball valves

Description	Mat. No.
Ball valve, Rp 1 1/4	01120607
Ball valve CuZn PN 16, Rp 2	01050382

Technical data

Table 25: Technical data of the ball valve

Feature	Value
Material	Brass (CuZn)
Max. pressure load	PN 16

Dimensions

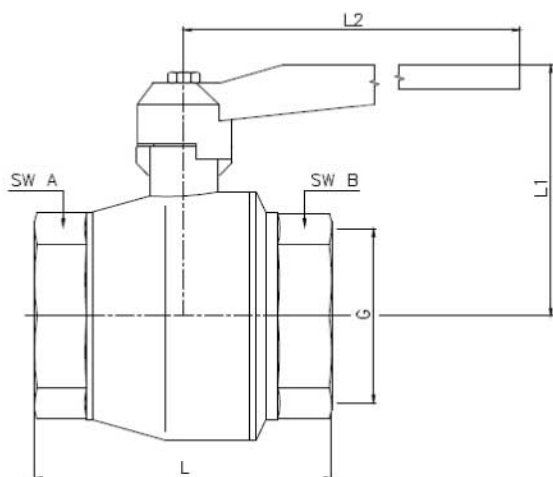


Fig. 9: Dimensions of the ball valve

Table 26: Dimensions of the ball valve

Ball valve	L	L1	L2	SW A	SW B
	[mm]	[mm]	[mm]	[mm]	[mm]
Rp 1 1/4	82	65	115	47	47
Rp 2	105	87	150	66	66

P11 – Flanged ball valve, stainless steel, PN 16



To be able to disconnect the sewage lifting unit from the discharge line or inlet line in the event of a fault or for any maintenance work, or to prevent any undesired backflow/inflow, installing gate valves is recommended (also see EN 12056-4).

Flanged ball valves are especially suited for sewage lifting units of variant C that are used for pumping aggressive fluids.

Available versions

Table 27: Available versions of flanged ball valves

Description	Mat. No.
Flanged ball valve, stainless steel 1.4408, DN 80	01723156
Flanged ball valve, stainless steel 1.4408, DN 100	01723239

Technical data

Table 28: Technical data of the ball valve

Feature	Value
Material	Stainless steel 1.4408
Max. pressure load	PN 16
Max. temperature	180 °C
Flange pattern	PN 10 / 16 to EN 1092-1/2

Dimensions

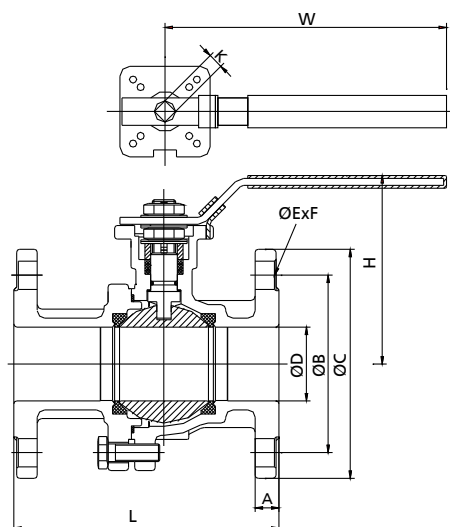


Fig. 10: Dimensions of the flanged ball valve

Table 29: Dimensions of the flanged ball valve

DN	A	B	C	D	H	K	L	E/F	W
	[mm]	[mm]	[mm]	[mm]	[mm]	[mm]	[mm]	[mm]	[mm]
80	24	160	200	76	174	17	180	18×8	300
100	24	160	220	100	198	22	190	22×8	335

P11 - PVC gate valve



To be able to disconnect the sewage lifting unit from the inlet pipe in the event of a fault or for any maintenance work, or to prevent any undesired inflow, it is recommended to install an inlet-side gate valve (also see EN 12056-4).

Simple PVC gate valves can be used for this purpose.

Flow may pass the PVC gate valve in either direction. The valve can be installed horizontally or vertically.

Available versions

Table 30: Available versions of gate valves

Description	Mat. No.
Gate valve, PN 1, DN 100	01121715
PVC gate valve PN 1, DN 150	01121714
PVC gate valve PN 1, DN 200	01506896

Technical data

Table 31: Technical data of the gate valve

Feature	Value
Material	Plastic (PVC)
Material of the sealing element	EPDM
Max. pressure load	PN 1
Max. temperature	40 °C, for a short time (≤ 5 min) up to 65 °C

Dimensions

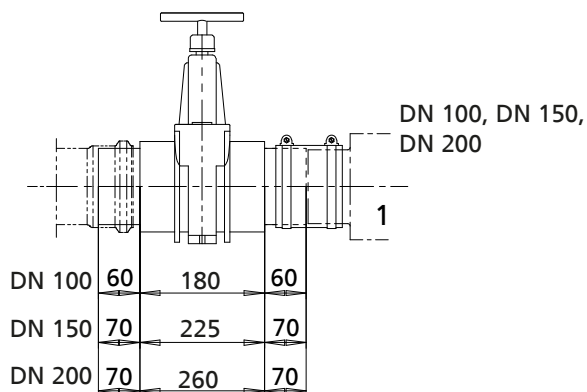


Fig. 11: Dimensions of the PVC gate valve

1	Tank connection
---	-----------------

P11 - Gate valve to KSB's choice



In the event of a fault or for any maintenance work, using gate valves is recommended in accordance with EN 12056-4:

- Removing the discharge line / inlet line
- Preventing undesired inflow / backflow

Available versions

Table 32: Available versions of gate valves

Description	Mat. No.
Shut-off valve (KSB's choice)	01056707
Gate valve to KSB's choice, PN 10, DN 80	01056708
Gate valve to KSB's choice, PN 10, DN 100	01056709
Gate valve to KSB's choice, PN 10, DN 150	01056710
Gate valve to KSB's choice, PN 6, DN 200	01132653

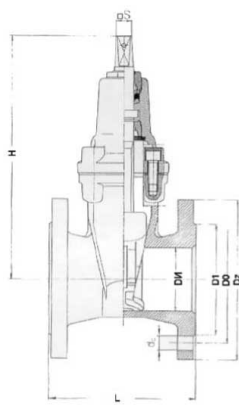
Technical data

Table 33: Technical data of the gate valve

Feature	Value
Material	Grey cast iron
Material of the gate valve wedge	NBR
Flange pattern	PN 10 / 16 to EN 1092-1/2 ⁵⁾
Max. temperature	120 °C

Dimensions

Table 34: Dimensions of the gate valve

	Dimensions	DN 65	DN 80	DN 100	DN 150	DN 200
		[mm]	[mm]	[mm]	[mm]	[mm]
	L	170	180	190	210	230
	H	265	290	325	457	534
	D1	118	138	158	212	268
	Dz	185	200	220	285	340
	D0	145	160	180	240	295
	S	4 × 18	8 × 18	8 × 18	8 × 22	12 × 22

⁵⁾ DN 200 drilled to PN 10

P12 - Installation accessories



Installation accessories are generally required for connecting flanges made of steel, grey cast iron or plastic. This comprises:

- 8 hexagon head bolts with nuts (for DN 200: 12 bolts and nuts)
- 1 gasket

Available versions

Table 35: Available versions

Description	Mat. No.
Set of installation accessories, DN 80	18072644
Set of installation accessories, DN 100	18060163
Set of installation accessories, DN 150	18076348
Set of installation accessories, DN 200	18040967

P13 - Y-pipes

DN 50



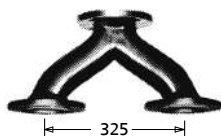
Version for sewage lifting units with a cutter

For all dual-pump units with a free-flow impeller up to UZ300 the required y-pipe is included in the scope of supply.

In the following cases the y-pipe has to be ordered from the accessories:

- Sewage lifting units with cutter
- Sewage lifting units for larger flow rates (Compacta UZ450, Compacta UZ900)
- Sewage lifting units in variant C (for pumping aggressive fluids)

DN 80



DN 100



Version for sewage lifting units of sizes UZ450, UZ900 and models in variant C

Technical data

Table 36: Technical data of the y-pipe

Feature	Value
Flange pattern	PN 10 / 16, to EN 1092-1/2

Available versions

Table 37: Y-pipes for standard design

Description	Mat. No.
Y-pipe, DN 50, Galvanised steel, with union nuts, for sewage lifting units with a cutter UZ5150	01121711
Y-pipe, DN 80, grey cast iron, A = 325 mm, with 16 hexagon head bolts, nuts and 2 sealing elements, for sewage lifting units UZ3.-5.450	18040966
Y-pipe, DN 100, with 8 hexagon head bolts, nuts and 1 sealing element, Steel, A = 525 mm (A = distance between the two pipes), for sewage lifting units UZ3.-5.900, UZ10.-15.450, UZ12-15.900	18040252
Y-pipe, DN 100, with 8 hexagon head bolts, nuts and 1 sealing element, Steel, A = 570 mm (A = distance between the two pipes), for sewage lifting units UZ10. and 11.900	18040911

Table 38: Y-pipes for variant C (pumping aggressive fluids)

Description	Mat. No.
Y-pipe, DN 80, Grey cast iron with high-quality coating (Rilsan®), for sewage lifting units UZ1.150/C - UZ5.450/C	18041115
Y-pipe, DN 100, stainless steel (1.4571), A = 525 mm, with 8 hexagon head bolts, nuts and 1 sealing element, Stainless steel (1.4571), A = 525 mm (A = distance between the two pipes), for sewage lifting units UZ3.-5.900/C	18041287

P13.1 - GG transition flange



For connecting large Compacta lifting units, a transition from a DN 100 to a DN 150 flange might be necessary, depending on the installation requirements. A transition flange is available for this purpose.

Available versions

Table 39: Available versions of GG transition flanges

Description	Mat. No.
Adapter flange, DN 100/150	01134592

Technical data

Table 40: Technical data of the GG transition flange

Feature	Value
Material	Grey cast iron
Flange pattern	PN 10 / 16, to EN 1092-1/2
Scope of supply	16 stay bolts (L = 30 mm), discs and nuts

Dimensions

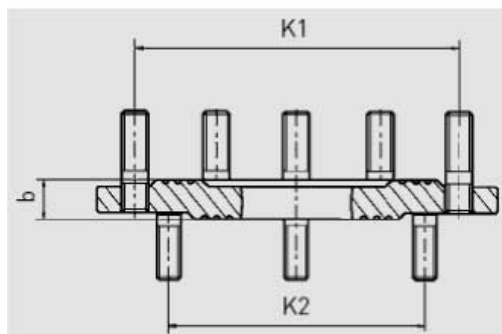


Fig. 12: Dimensions of the GG transition flange

Table 41: Dimensions of the GG transition flange

K1	K2	b
[mm]	[mm]	[mm]
240	180	30

P14 - Hand diaphragm pump



A hand diaphragm pump can be used to drain the sewage lifting unit in the event of a fault or power failure, or for any maintenance work.

Available versions

Table 42: Available versions of hand diaphragm pumps

Description	Mat. No.
Hand diaphragm pump	00520485

Technical data

Table 43: Technical data of the hand diaphragm pump

Feature	Value
Material	Grey cast iron
Connection	Rp 1 1/2
Discharge head	15 m
Suction lift	7 m
Flow rate	30 l/min
Strokes per minute	45
Weight	15 kg

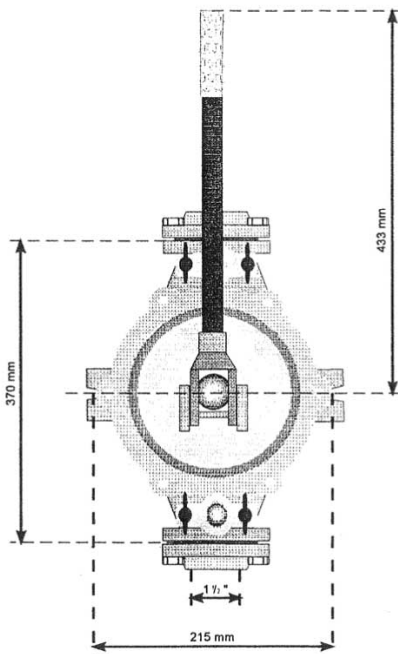


Fig. 13: Dimensions of the hand diaphragm pump

P15 - Three-way plug valve



A three-way plug valve combined with a hand diaphragm pump (see P14) might be required to drain the sewage lifting unit in the event of a fault or power failure, or for any maintenance work.

Available versions

Table 44: Available versions of three-way plug valves

Description	Mat. No.
Three-way plug valve, Rp 1 1/2	19053063

Technical data

Table 45: Technical data of the three-way plug valve

Feature	Value
Material	Brass
Connection	Rp 1 1/2
Width across flats of connection	WAF22

P20 - Blind flange



For maintenance work or in the event of a fault, the rotating assembly or one of the pumps may have to be removed temporarily. Blind flanges are available for this purpose. On dual-pump stations they tightly cover the opening in the tank where one of the pumps has been removed and allow the sewage lifting unit to resume operation with the remaining pump. Blind flanges prevent any leakage of the fluid, even if the sewage lifting unit is completely full.

Available versions

Table 46: Blind flanges for closing the pump casing when the rotating assembly has been removed

Description	Mat. No.
Blind flange For MiniCompacta U60, U100 and UZ150	18040964
Blind flange for MiniCompacta US40, plastic	18041731
Blind flange For (Mini)Compacta U(S)100, UZ(S)150, U(Z)300, UZ3.-5.450 and UZ3.-5.900	18040965
Blind flange For Compacta UZ12.-15.900 (without drawing)	18040353

Table 47: Blind flanges for closing the tank when one of the pumps has been removed

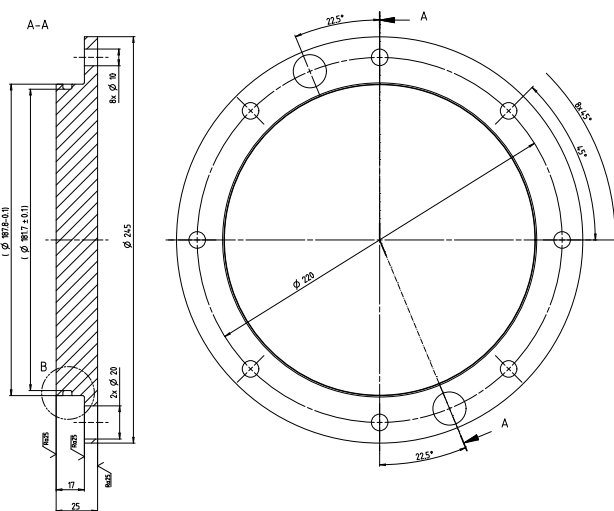
Description	Mat. No.
Blind flange for (Mini)Compacta U(S)100, UZ(S)150 and U(Z) 300 (not illustrated)	18041087

Technical data

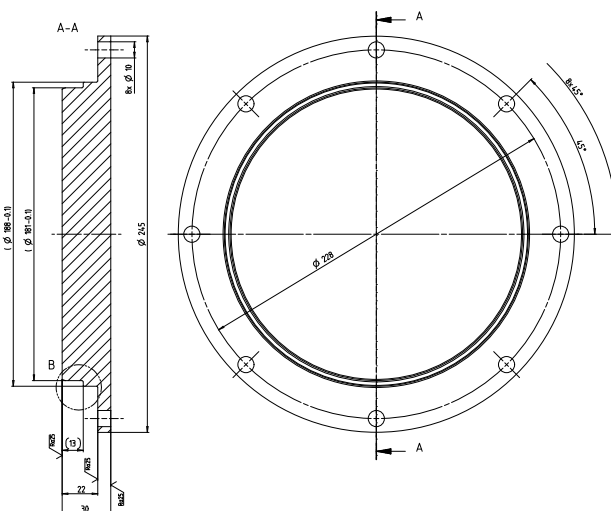
Table 48: Technical data of the blind flange

Feature	Value
Material	Steel

Dimensions



Dimensions of the blind flange (Mat. No. 18040965)



Dimensions of the blind flange (Mat. No. 18040964)

The package offer for any spare parts required during 10 years' operation comprises a 10-year spare parts warranty for all single-pump sewage lifting units of the MiniCompacta series within the stipulated conditions and limits. The 10-year spare parts warranty package is available for Germany only.

Available package offers

Description	Mat. No.
Package offer for any spare parts required during 10 years' operation of MiniCompacta U40, U60, U100 and U5100	18040943



KSB SE & Co. KGaA
Johann-Klein-Straße 9 • 67227 Frankenthal (Germany)
Tel. +49 6233 86-0
www.ksb.com