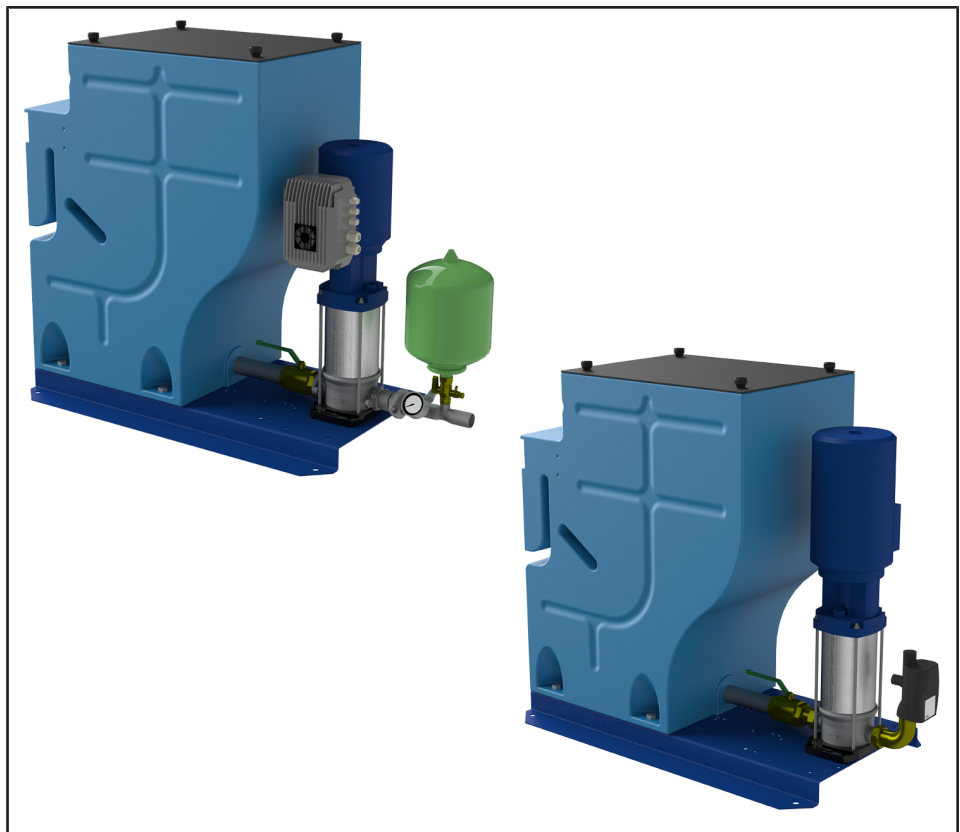


Break Tank Package Booster Set

KSB Safety Boost

For Safeguarding Drinking Water Quality to EN 1717

Type Series Booklet



Legal information/Copyright

Type Series Booklet KSB Safety Boost

All rights reserved. The contents provided herein must neither be distributed, copied, reproduced, edited or processed for any other purpose, nor otherwise transmitted, published or made available to a third party without the manufacturer's express written consent.

Subject to technical modification without prior notice.

© KSB SE & Co. KGaA, Frankenthal 09/04/2021

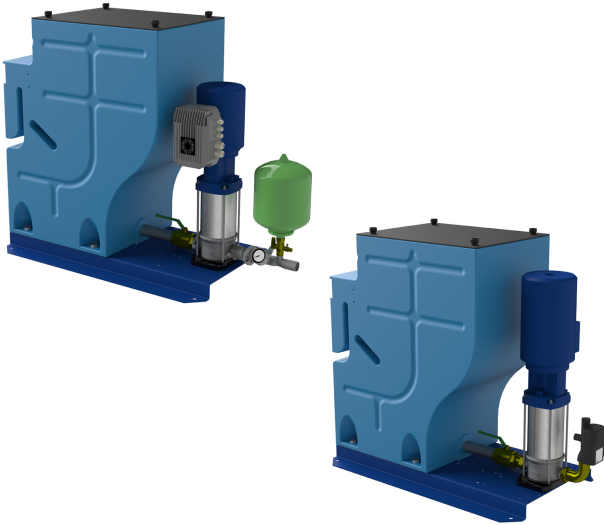
Contents

| | |
|--|----------|
| Building Services: Water Supply | 4 |
| Break Tank Package Booster Set | 4 |
| KSB Safety Boost | 4 |
| Main applications..... | 4 |
| Fluids handled | 4 |
| Operating data..... | 4 |
| Design details | 4 |
| Designation | 5 |
| Materials..... | 5 |
| Product benefits..... | 5 |
| Product information | 5 |
| Technical data | 5 |
| Characteristic curves..... | 6 |
| Dimensions | 7 |
| Scope of supply | 8 |

Building Services: Water Supply

Break Tank Package Booster Set

KSB Safety Boost



Main applications

- Spray irrigation systems
- General irrigation systems
- Service water supply systems
- Domestic water supply
- Rainwater harvesting
- Water supply systems

Fluids handled

- Service water
- Cooling water
- Fluids not chemically or mechanically aggressive to the materials

Operating data

Table 1: Operating properties

| Characteristic | | Value |
|--------------------|----------|-------|
| Flow rate | Q [m³/h] | 7 |
| | Q [l/s] | 1,67 |
| Head | H [m] | 75 |
| Fluid temperature | T [°C] | ≥ 0 |
| | | ≤ +30 |
| Operating pressure | p [bar] | ≤ 10 |

Design details

Design

- Fully automatic ready-to-connect break tank package booster set
- For separating drinking water and liquids of category 5 as per DIN EN 1717
- Modular design (tank with type AB air gap and vertical high-pressure pump)
- Baseplate-mounted
- Discharge-side, direct-flow membrane-type accumulator, approved for drinking water

Installation

- Stationary dry installation

Drive

- AC motor
- 230 V, 50 Hz
- IP54 enclosure
- Thermal class F

Connections

- Suction-side connection DN 32
- Discharge-side connection DN 32

Automation

- IP65 enclosure
- Function/fault indicated
- Reset function
- Pressure gauge

Version without variable speed system:

- Control unit
- Pressure-controlled starting and flow-controlled stopping

Version with variable speed system:

- Single-phase frequency inverter, motor-mounted
- Pressure-controlled starting and pressure-controlled stopping

Designation

Example: KSB Safety Boost MVP 1/0607

Table 2: Designation key

| Code | Description |
|------------------|----------------------------------|
| KSB Safety Boost | Type series |
| MVP | With variable speed system |
| 1 | Number of pump sets |
| 06 | Size of pump set |
| 07 | Number of stages of the pump set |

Materials

Table 3: Overview of available materials

| Component | Material |
|---------------------------|--|
| Pump casing | Stainless steel |
| Tank | PPA |
| Pump shroud | Stainless steel |
| Hydraulic system | Stainless steel |
| Sealing element | EPDM |
| Plain bearing | Aluminium oxide |
| Mechanical seal | To EN 12756 |
| Primary ring | Silicon carbide |
| Mating ring | Hard carbon |
| Elastomer | EPDM |
| Piping | Brass, gunmetal/chrome steel |
| Membrane-type accumulator | Connection made of stainless steel, flow through valve to DIN 4807-5 |
| Membrane | Approved for drinking water |

Product benefits

- Corrosion-resistant design with high-quality stainless steel
- Very compact, space-saving design
- Highest level of protection for Category 5 liquids
- Easy and fast commissioning of ready-to-connect, pre-assembled and tested system
- Hygienic separation of drinking water and non-drinking water eliminates any risk of contamination.
- Hygienically safe due to DVGW-certified flushing valve and float valve materials in accordance with KTW and W270
- Saves energy through efficient operating mode

Product information

Product information as per Regulation No. 1907/2006 (REACH)

For information as per chemicals Regulation (EC) No. 1907/2006 (REACH), see <https://www.ksb.com/ksb-en/About-KSB/Corporate-responsibility/reach/>.

Technical data

KSB Safety Boost

Table 4: Symbols key

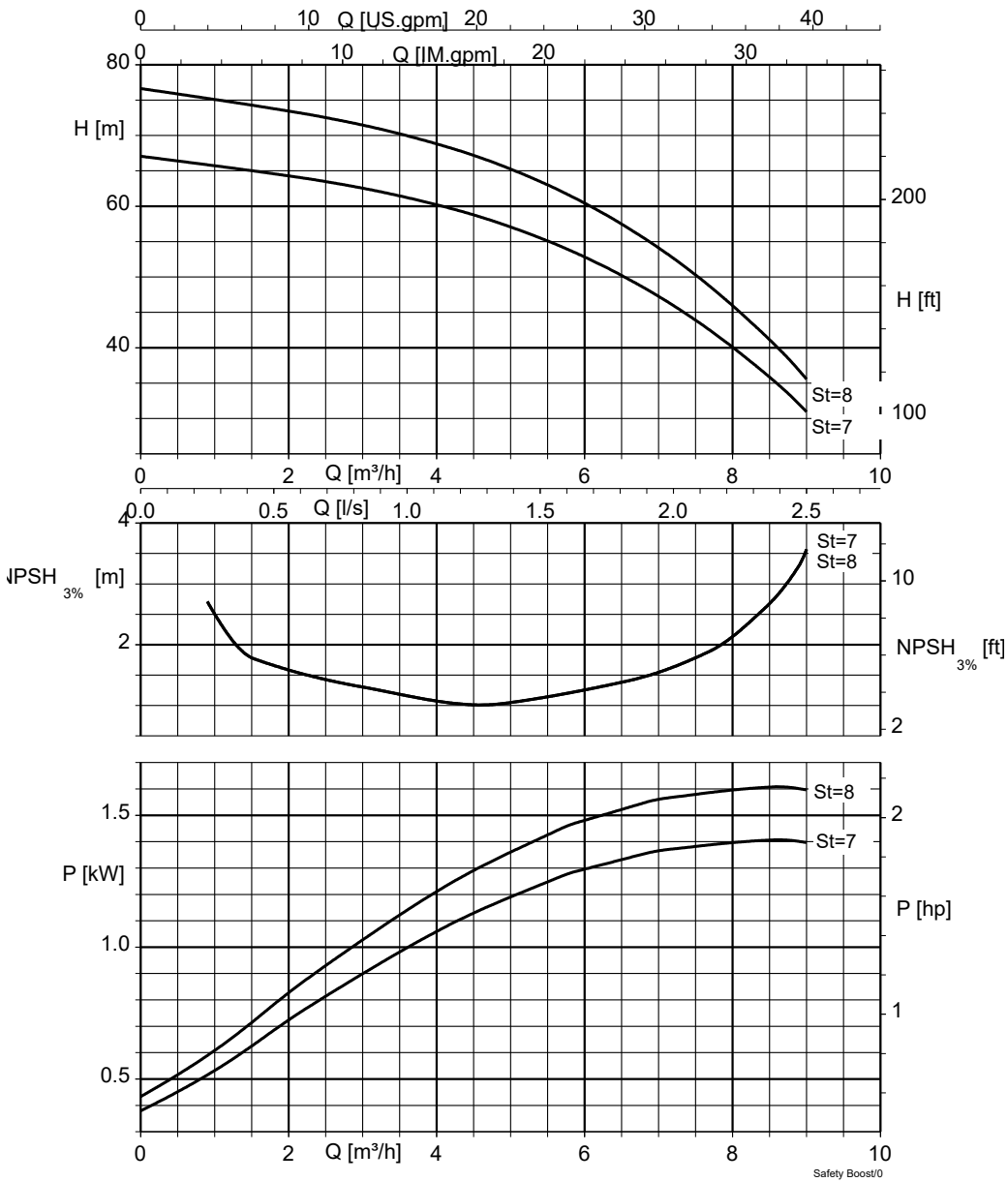
| Symbol | Description |
|--------|-----------------------|
| x | Version available |
| - | Version not available |

Table 5: Selection table

| Size | P _N [kW] | I _N 1~230 V | Connection (suction side – discharge side) | Variable speed system | Mat. No. | [kg] |
|------------|------------------------|---------------------------|--|-----------------------|----------|------|
| | | [A] | | | | |
| MVP 1/0607 | 1,5 | 8,0 | G 1 1/4 - R 1 1/4 (DN 32) | x | 29135101 | 100 |
| 1/0608 | 1,5 | 8,0 | G 1 1/4 - R 1 1/4 (DN 32) | - | 29135002 | 81 |

Characteristic curves

KSB Safety Boost, n = 2950 rpm



7 = KSB Safety Boost MVP 1/0607
8 = KSB Safety Boost 1/0608

Dimensions

KSB Safety Boost

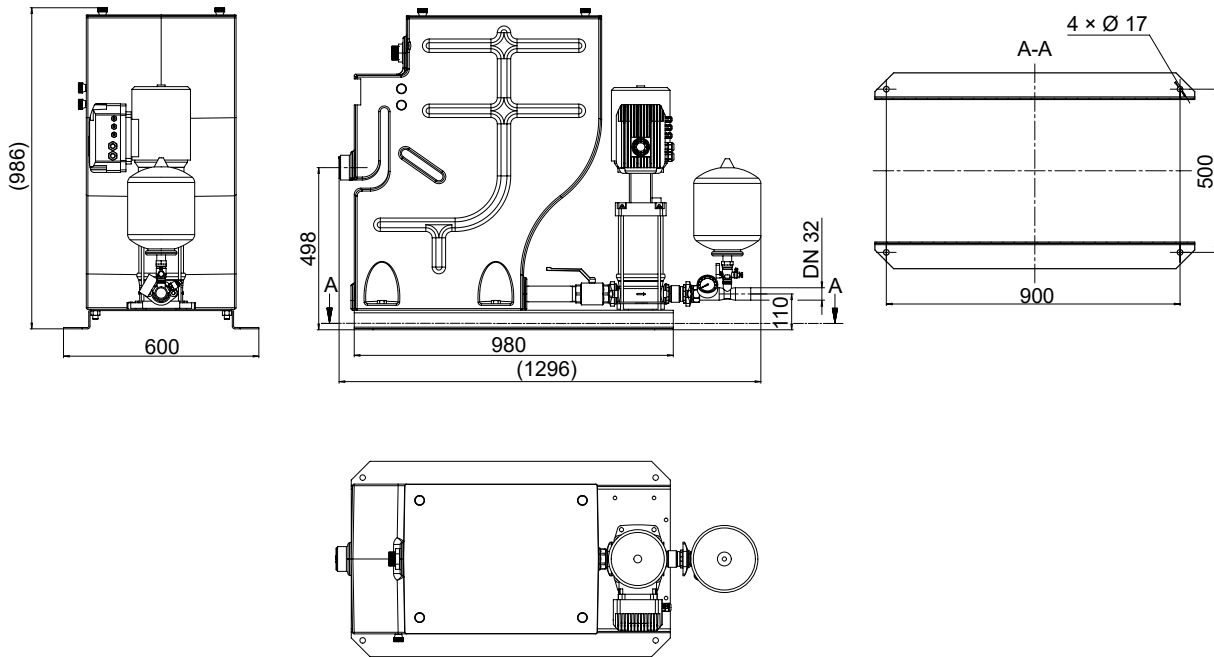


Fig. 1: Dimensions of KSB Safety Boost MVP 1/0607 [mm]

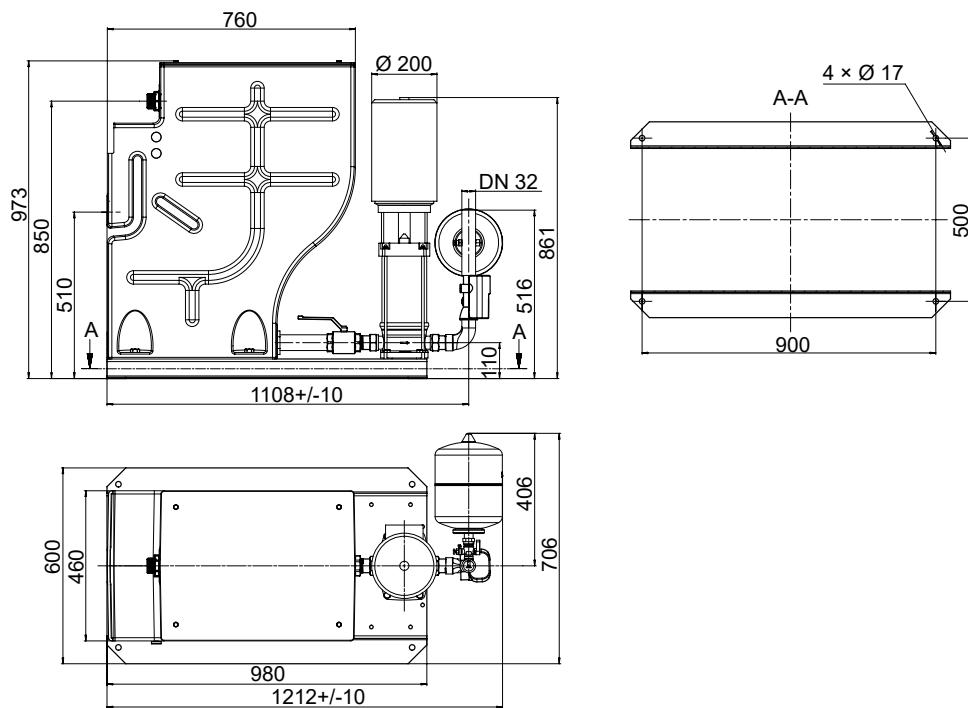


Fig. 2: Dimensions of KSB Safety Boost 1/0608 [mm]

Scope of supply

Depending on the model, the following items are included in the scope of supply:

Break tank package booster set for safeguarding drinking water quality to EN 1717

- 1 vertical Movitec high-pressure centrifugal pump
- Integrated check valve
- Shut-off valves
- Discharge-side, direct-flow membrane-type accumulator
- Pressure gauge
- Control unit
- Frequency inverter



KSB SE & Co. KGaA
Johann-Klein-Straße 9 • 67227 Frankenthal (Germany)
Tel. +49 6233 86-0
www.ksb.com