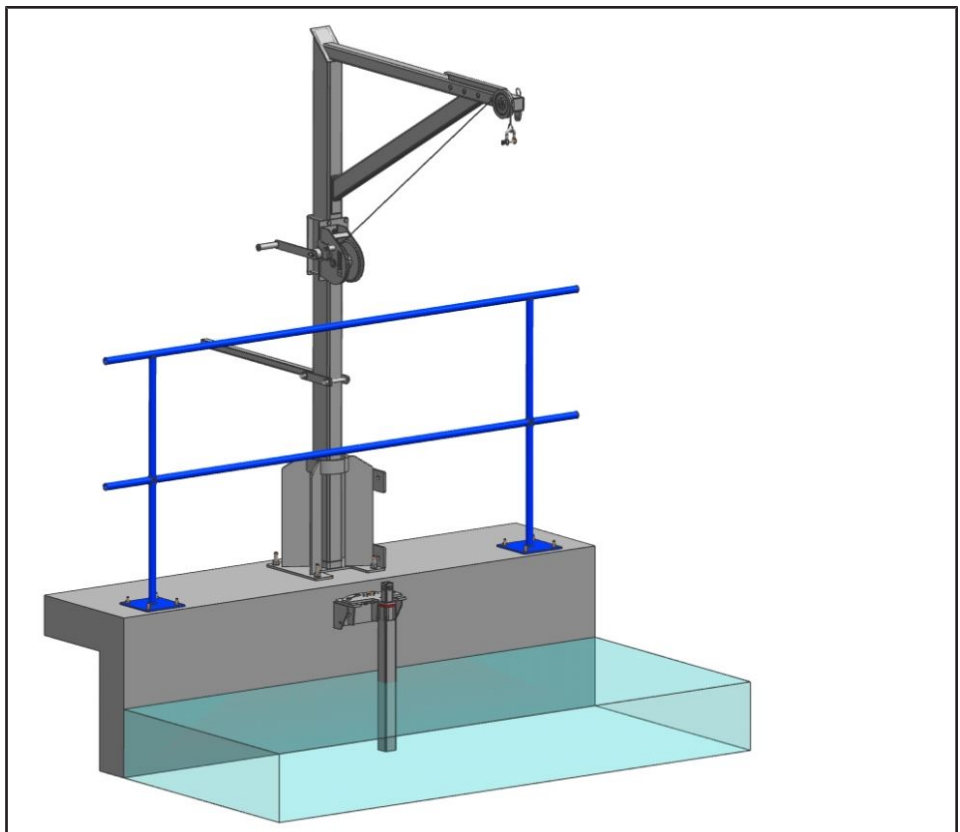


Lifting Equipment

# Lifting Equipment

## Type Series Booklet



## **Legal information/Copyright**

Type Series Booklet Lifting Equipment

All rights reserved. The contents provided herein must neither be distributed, copied, reproduced, edited or processed for any other purpose, nor otherwise transmitted, published or made available to a third party without the manufacturer's express written consent.

Subject to technical modification without prior notice.

© KSB SE & Co. KGaA, Frankenthal 2023-03-31

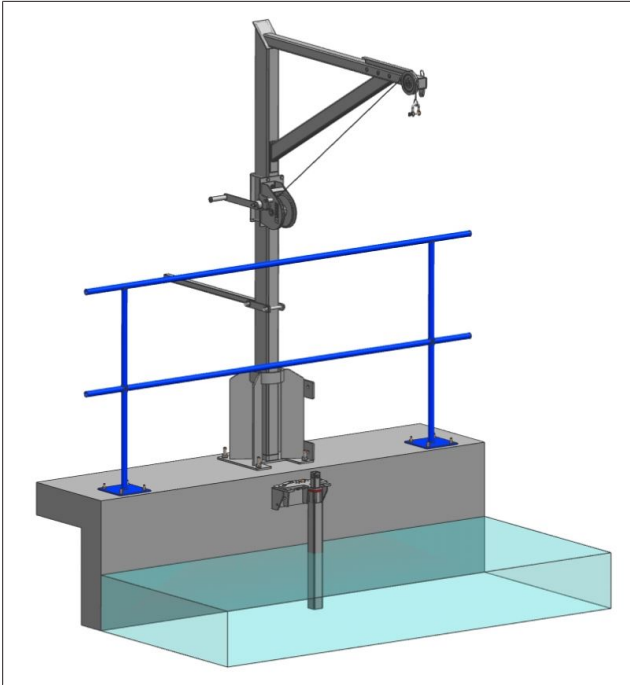
## Contents

<b>Lifting Equipment .....</b>	<b>4</b>
Lifting Equipment for Submersible Motor Pumps and Submersible Mixers .....	4
Lifting Equipment .....	4
Main applications.....	4
Product benefits.....	4
Selection tables .....	5
Technical data .....	5
Installation types.....	5
Scope of supply .....	6
Accessories.....	7
General assembly drawings.....	8

## Lifting Equipment

### Lifting Equipment for Submersible Motor Pumps and Submersible Mixers

## Lifting Equipment



#### Main applications

- Lifting and lowering pumps and mixers
- Waste water management
- Waste water treatment plants
- Drainage systems

#### Product benefits

- Corrosion-resistant design with high-quality stainless steel 1.4301
- For wall mounting or floor mounting
- Proven rope winch made of stainless steel 1.4301
- Wire rope, stainless steel 1.4401

## Selection tables

**Table 1:** Selection table

Type series Product to be lifted	DK-VA-220-1030-2285 (⇒ Page 8)	DK-VA-360-1375-2305 (⇒ Page 9)	DK-VA-550-1385-2210 (⇒ Page 10)
<b>Amamix</b>			
200, 300, 400, 600 C	<b>X</b>	-	-
600 G	-	<b>X</b>	-
<b>Amaprop</b>			
< 220 kg	<b>X</b>	-	-
> 220 kg to < 360 kg	-	<b>X</b>	-
> 360 kg to < 550 kg	-	-	<b>X</b>
<b>Amaline</b>			
< 220 kg	<b>X</b>	-	-
> 220 kg to < 360 kg	-	<b>X</b>	-
> 360 kg to < 550 kg	-	-	<b>X</b>
<b>AmaRoc</b>			
1100	-	<b>X</b>	-
1450	-	-	<b>X</b>
1800	-	-	-
<b>Amarex / Amarex KRT</b>			
< 220 kg	<b>X</b>	-	-
> 220 kg to < 360 kg	-	<b>X</b>	-
> 360 kg to < 550 kg	-	-	<b>X</b>

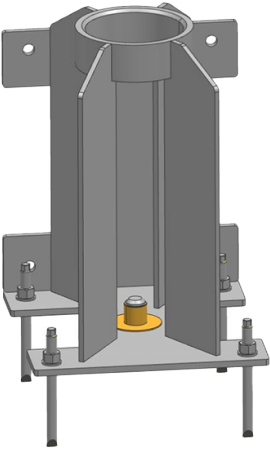
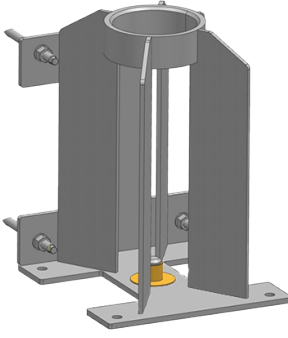
## Technical data

**Table 2:** Technical data of KSB lifting equipment

Feature	DK-VA-220-1030-2285	DK-VA-360-1375-2305	DK-VA-550-1385-2210
Crane mast	32 kg	44 kg	52,8 kg
Rope winch	9,8 kg	13,9 kg	13,9 kg
Rope dimensions	4 mm	6 mm	6 mm
Standard rope length	12 m	12 m	12 m
Max. rope capacity	19,5 m	20 m	20 m
Required crank force	180 N	220 N	220 N
Average lift per crank rotation	187,5 mm	55 mm	55 mm
Length of lifting rope	12 m	12 m	12 m
Diameter of lifting rope	4 mm	6 mm	6 mm


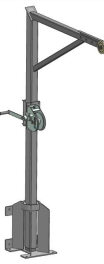
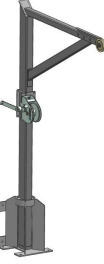



## Installation types

**Table 3:** Mounting arrangements

Stainless steel variant	
Floor mounting	Wall mounting
	

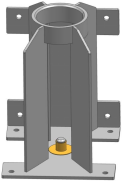


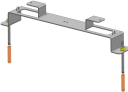

## Scope of supply

**Table 4:** Scope of supply of the lifting equipment

	Description	DK- VA-220-1030-2285	DK- VA-360-1375-2305	DK- VA-550-1385-2210	Quantity	Mat. No.
	Davit crane, 1.4301 (for use with universal socket from year of supply 2023)	X	-	-	1	05210204
	Davit crane, 1.4301 (for use with universal socket from year of supply 2023)	-	X	-	1	05210205
	Davit crane, 1.4301 (for use with universal socket from year of supply 2023)	-	-	X	1	05210206
	Slewing handle, 1.4301	X	X	X	1	05210393
	Shackle, 1.4404 Maximum load-carrying capacity 500 kg	X	-	-	1	39023839
	Shackle, 1.4401 Maximum load-carrying capacity 1250 kg	-	X	X	1	01548113
	Rope winch, 1.4301, incl. lifting rope for davit crane, 1.4401, L = 12 m Maximum load-carrying capacity 250 kg	X	-	-	1	05204296
	Rope winch, 1.4301, incl. lifting rope for davit crane, 1.4401, L = 12 m Maximum load-carrying capacity 650 kg	-	X	X	1	05210625

## Accessories

**Table 5: Accessories**

	Description	DK- VA-220-1030-2285	DK- VA-360-1375-2305	DK- VA-550-1385-2210	Quantity	Mat. No.
	Universal socket (120 / 140 mm), 1.4301, floor-mounted / wall-mounted (for use with davit crane from year of supply 2023)	✗	-	-	1	05210202
	Chemical anchors, M10 × 130	✗	-	-	4	01477438
	Mortar cartridge	✗	-	-	4	01473676
	Universal socket (150 / 180 mm), 1.4301, floor-mounted / wall-mounted (for use with davit crane from year of supply 2023)	-	✗	✗	1	05210203
	Chemical anchors, M16 × 190	-	✗	✗	4	01477445
	Mortar cartridge	-	✗	✗	4	01473688
	Rope for extra lift, 1.4401 Maximum load-carrying capacity 650 kg Only for Amarex / Amarex KRT	✗	✗	✗	1	05215415
	Lifting rope (for rope winch), 1.4401, L = 12 m, Ø = 4 mm Maximum load-carrying capacity 250 kg	✗	-	-	1	05208825
	Lifting rope (for rope winch), 1.4401, L = 18 m, Ø = 4 mm Maximum load-carrying capacity 250 kg	✗	-	-	1	05208827
	Lifting rope (for rope winch), 1.4401, L = 19,5 m, Ø = 4 mm Maximum load-carrying capacity 250 kg	✗	-	-	1	05208828
	Lifting rope (for rope winch), 1.4401, L = 12 m, Ø = 6 mm Maximum load-carrying capacity 650 kg	-	✗	✗	1	01313455
	Lifting rope (for rope winch), 1.4401, L = 18 m, Ø = 6 mm Maximum load-carrying capacity 650 kg	-	✗	✗	1	01313456
	Lifting rope (for rope winch), 1.4401, L = 20 m, Ø = 6 mm Maximum load-carrying capacity 650 kg	-	✗	✗	1	05211200
	Rope winder, 1 no.	✗	✗	✗	1	11304622
	Clamping piece	✗	✗	✗	2	01044408
	Chemical anchors	✗	✗	✗	2	01477438
	Mortar cartridge	✗	✗	✗	2	01473676
	Nut	✗	✗	✗	4	00180135
	Lifting hook, three-prong design, for fitting to the crane's lifting tackle Maximum load-carrying capacity 500 kg	✗	✗	✗	1	19219613

## General assembly drawings

DK-VA-220-1030-2285

### Dimensions of a davit crane < 220 kg

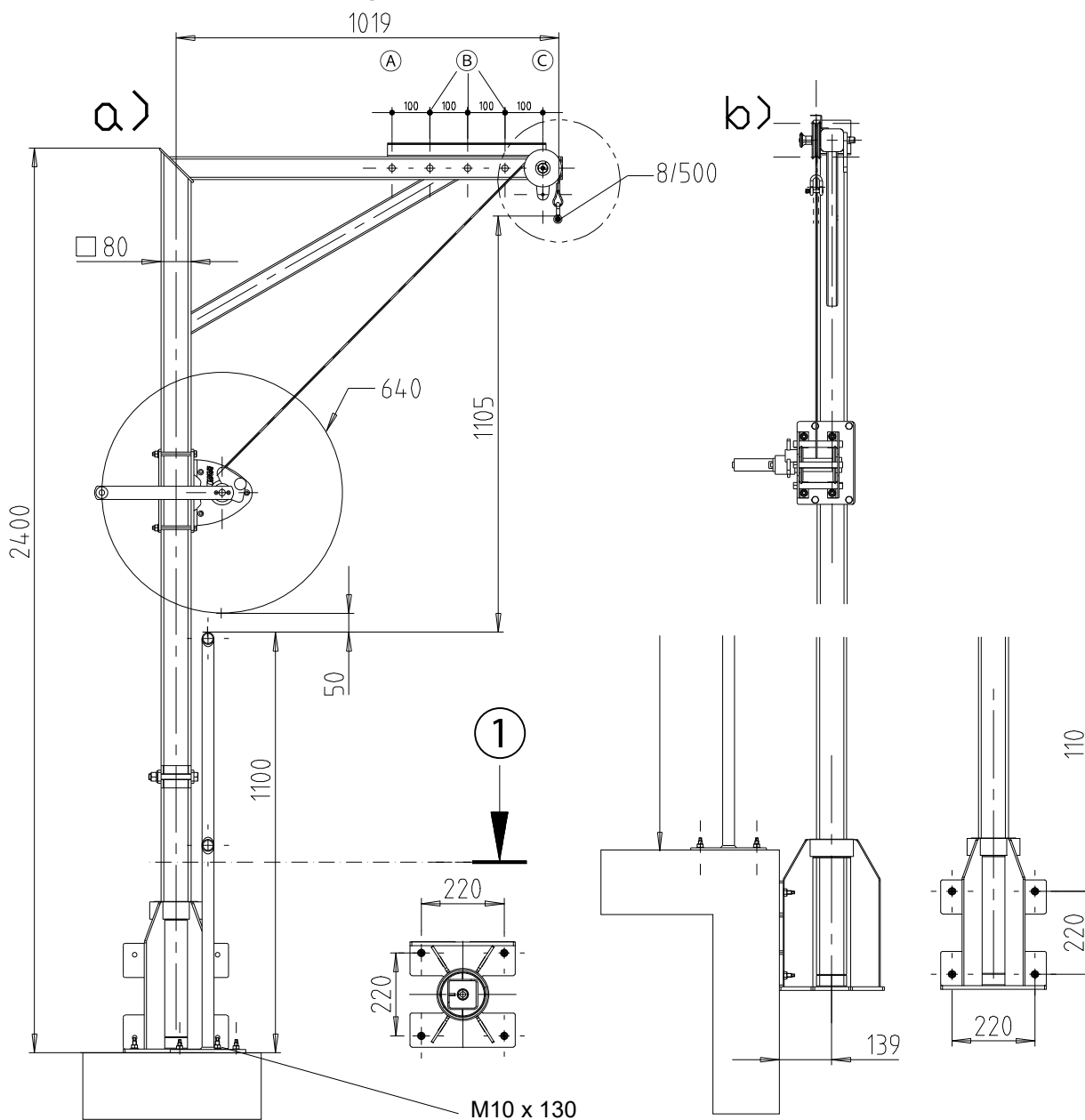
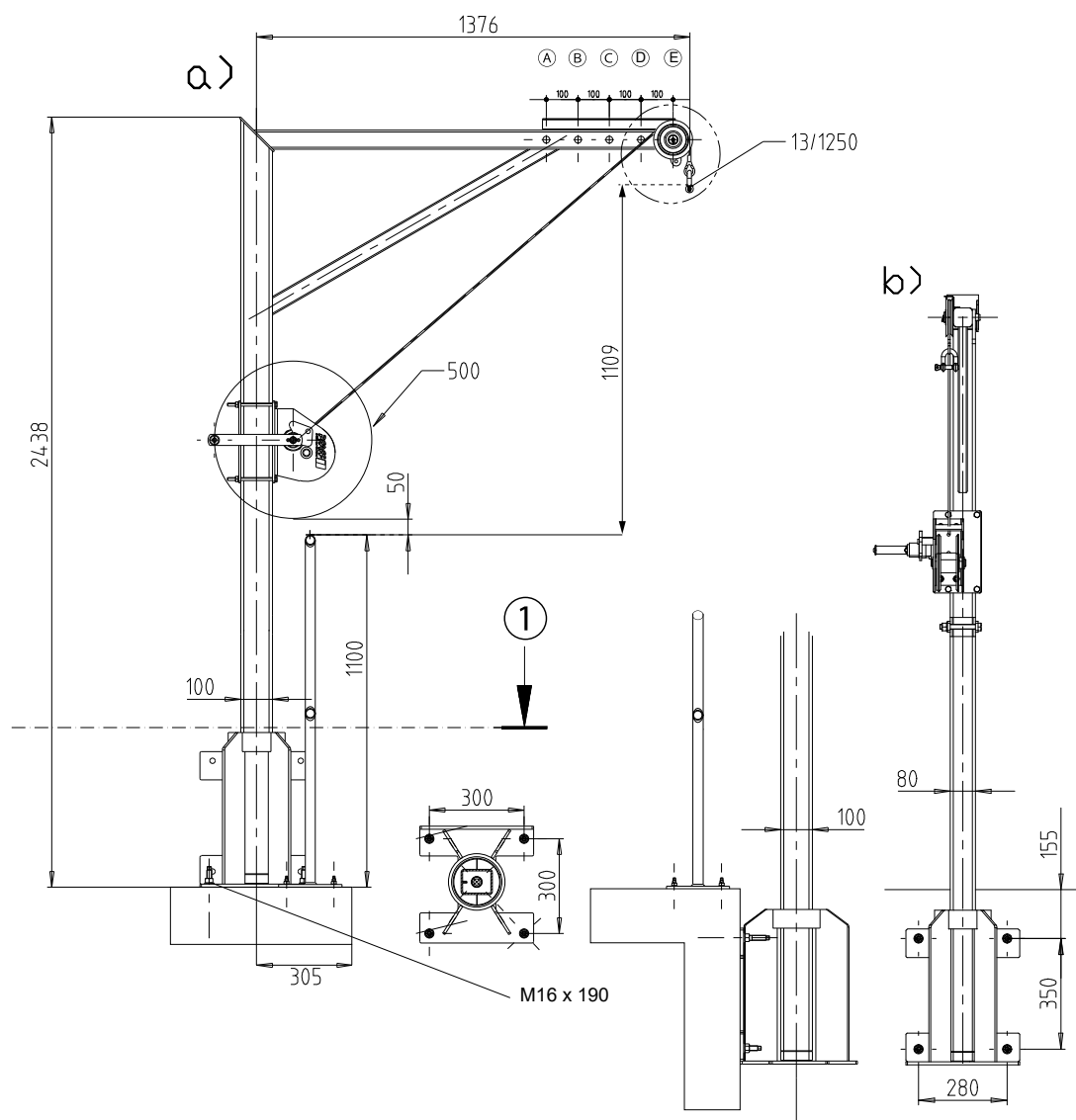


Fig. 1: Dimensions of a 220 kg davit crane  
a) Floor-mounted / b) Wall-mounted

Ⓐ	Maximum load-carrying capacity 250 kg	Ⓑ	Maximum load-carrying capacity 240 kg
Ⓒ	Maximum load-carrying capacity 220 kg	①	Floor edge (wall mounting)



### Dimensions of a davit crane < 360 kg

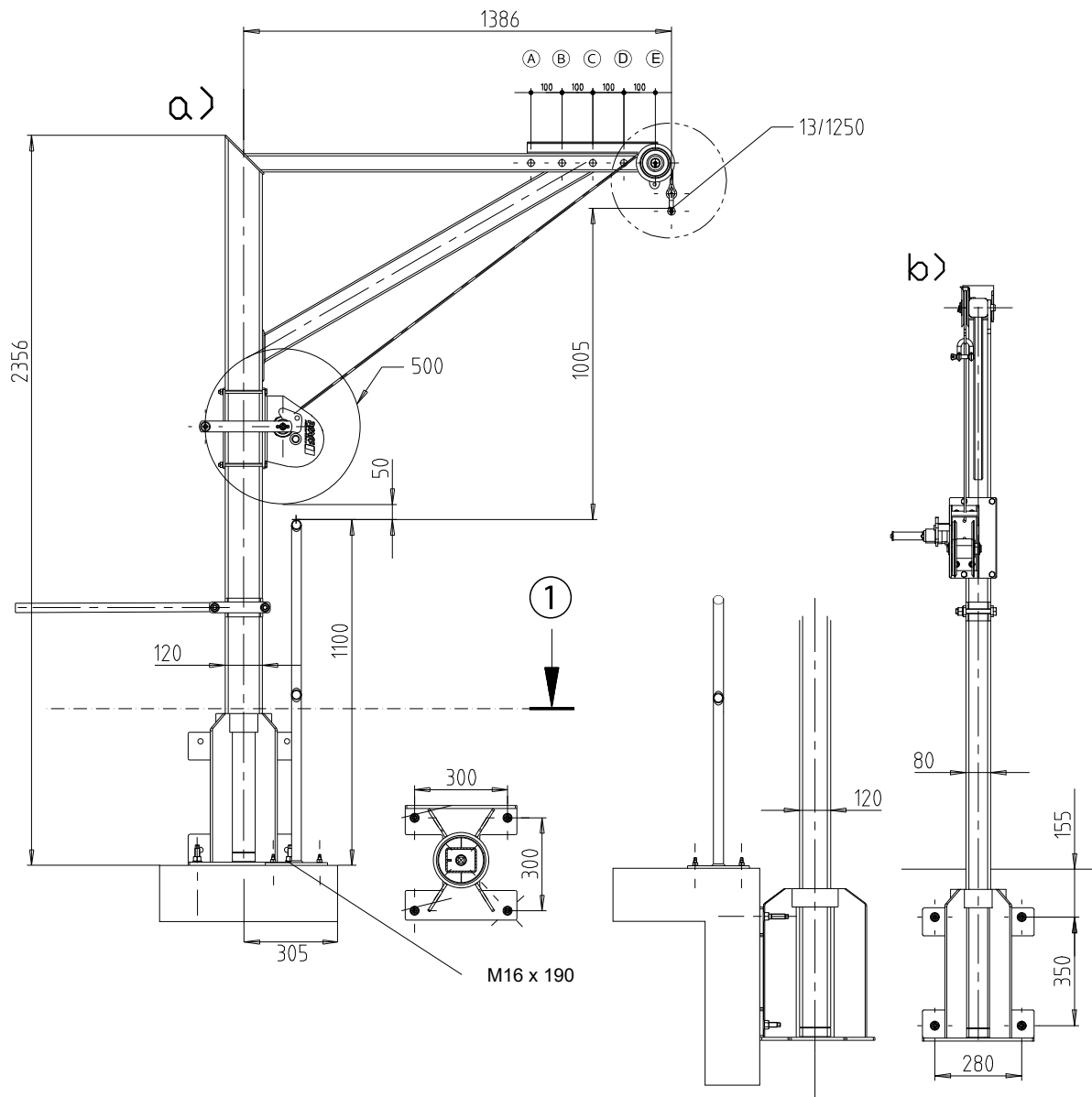


**Fig. 2:** Dimensions of a 360 kg davit crane  
a) Floor-mounted / b) Wall-mounted

Ⓐ	Maximum load-carrying capacity 460 kg	Ⓑ	Maximum load-carrying capacity 430 kg
Ⓒ	Maximum load-carrying capacity 400 kg	Ⓓ	Maximum load-carrying capacity 380 kg
Ⓔ	Maximum load-carrying capacity 360 kg	①	Floor edge (wall mounting)

DK-VA-550-1385-2210

Dimensions of a davit crane < 550 kg



**Fig. 3:** Dimensions of a 550 kg davit crane  
a) Floor-mounted / b) Wall-mounted

Ⓐ	Maximum load-carrying capacity 650 kg	Ⓔ	Maximum load-carrying capacity 650 kg
Ⓒ	Maximum load-carrying capacity 610 kg	Ⓕ	Maximum load-carrying capacity 570 kg
Ⓔ	Maximum load-carrying capacity 550 kg	①	Floor edge (wall mounting)





**KSB SE & Co. KGaA**  
Turmstraße 92 • 06110 Halle (Germany)  
Tel. +49 345 4826-0  
[www.ksb.com](http://www.ksb.com)