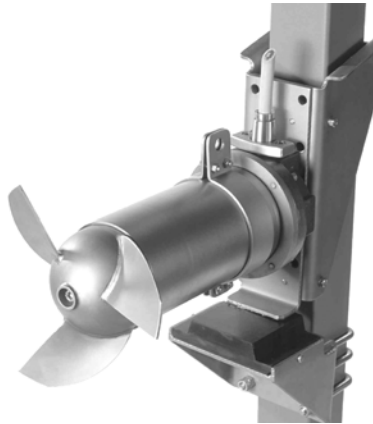
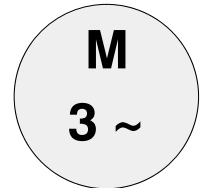


Electrical data for submersible motors



60 Hz

standard range



Attention!

- This motor catalogue is only valid in conjunction with the current type series booklet for Amamix[®] direct.
- Motor data depends on material versions!

Motor Speeds

4 Pole	-	1750 RPM
6 Pole	-	1160 RPM
8 Pole	-	875 RPM
12 Pole	-	580 RPM

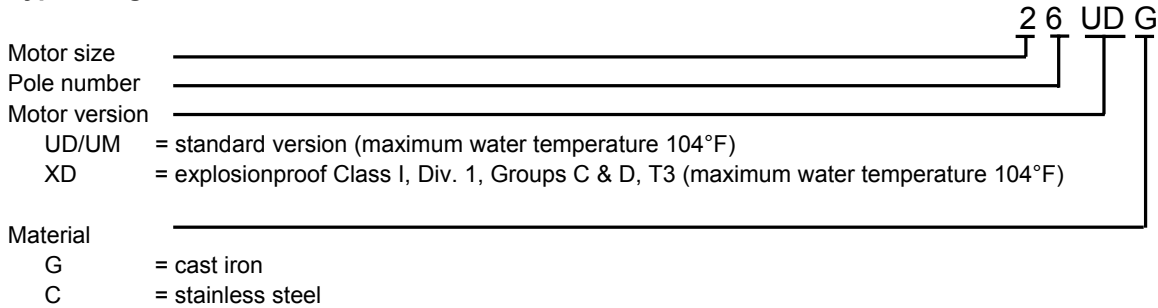
Motor Voltages

380 Volts
460 Volts
575 Volts

Additional voltages and speeds available upon request.

All submersible mixers type Amamix® - direct have three-phase squirrel-cage induction motors.

Type designation:



Frequency: 60 Hz

Voltage:

Standard voltages: 380V, 460 V and 575 V.
 Allowances for mains deviation are according to range A of IEC 60 034-1:
 supply voltage ± 5 %, supply frequency ± 2 %.
 Range B of IEC 60 034-1 is possible but continuous operation at full load may exceed insulation temperatures.
 supply voltage ± 10 %

Starting mode:

Across the line (D. O. L.)

Switching frequency:

max. 30/hr

Cable standard:

460 V: cable selection according to NEC
 575 V: cable selection according to CSA

Mode of temperatures:

Insulation system corresponds to insulation class F.
 The maximum pumped medium temperature is noted in the data tables.

Operation with variable frequency drive (VFD):

All motors are suitable for operation with VFD. All motors have a 1.10 service factor.

Index

Motors in Cast Iron	Page
380 Volts	4 - 5
460 Volts	6 - 7
575 Volts	8 - 9

Motors in Duplex Stainless Steel	Page
380 Volts	10 - 11
460 Volts	12 - 13
575 Volts	14 - 15

motor data 4-poles 380 V 60 Hz 3~ G

motor type efficiency class	motor rating P2 [hp]	max. temp. pum- ped media [°F]	speed nom. n _n [rpm]	FLA I _n [A]	LRA		cable size power + control cable			motor data				
					I _s [A]	NEMA code letter	Qty.	type	∅ min - max [in]	load	motor input [kW]	curr. I [A]	effec. [%]	power factor [-]
14UDG	1.7	104	1715	3.22	16	G	1	AWG 15-7	0.52-0.57	4/4	1.66	3.22	76.6	0.78
-								Rubber Cable [S1BN8-F]		3/4	1.26	2.74	75.5	0.70
										2/4	0.87	2.40	73.2	0.55
										1/4	0.51	2.13	62.8	0.36
14XDG	1.7	104	1715	3.22	16	G	1	AWG 15-7	0.52-0.57	4/4	1.66	3.22	76.6	0.78
-								Rubber Cable [S1BN8-F]		3/4	1.26	2.74	75.5	0.70
										2/4	0.87	2.40	73.2	0.55
										1/4	0.51	2.13	62.8	0.36
24UDG	3.4	104	1695	6.05	25	E	1	AWG 15-7	0.52-0.57	4/4	3.22	6.05	78.7	0.81
-								Rubber Cable [S1BN8-F]		3/4	2.38	4.89	79.9	0.74
										2/4	1.63	4.13	77.7	0.60
										1/4	0.94	3.64	67.8	0.39
24XDG	3.4	104	1695	6.05	25	E	1	AWG 15-7	0.52-0.57	4/4	3.22	6.05	78.7	0.81
-								Rubber Cable [S1BN8-F]		3/4	2.38	4.89	79.9	0.74
										2/4	1.63	4.13	77.7	0.60
										1/4	0.94	3.64	67.8	0.39

motor data 6-poles 380 V 60 Hz 3~ G

motor type efficiency class	motor rating P2 [hp]	max. temp. pum- ped media [°F]	speed nom. n _n [rpm]	FLA I _n [A]	LRA		cable size power + control cable			motor data				
					I _s [A]	NEMA code letter	Qty.	type	∅ min - max [in]	load	motor input [kW]	curr. I [A]	effec. [%]	power factor [-]
06UDG	2.8	104	1150	5.74	25	G	1	AWG 15-7	0.52-0.57	4/4	2.61	5.74	80.1	0.69
-								Rubber Cable [S1BN8-F]		3/4	1.96	4.96	79.8	0.60
										2/4	1.37	4.44	76.0	0.47
										1/4	0.82	4.02	63.7	0.31
06XDG	2.8	104	1150	5.74	25	G	1	AWG 15-7	0.52-0.57	4/4	2.61	5.74	80.1	0.69
-								Rubber Cable [S1BN8-F]		3/4	1.96	4.96	79.8	0.60
										2/4	1.37	4.44	76.0	0.47
										1/4	0.82	4.02	63.7	0.31
26UDG	4.7	104	1140	9.89	36	F	1	AWG 15-7	0.52-0.57	4/4	4.56	9.89	76.9	0.70
-								Rubber Cable [S1BN8-F]		3/4	3.42	8.67	76.8	0.60
										2/4	2.40	7.77	72.9	0.47
										1/4	1.44	7.28	61.0	0.30
26XDG	4.7	104	1140	9.89	36	F	1	AWG 15-7	0.52-0.57	4/4	4.56	9.89	76.9	0.70
-								Rubber Cable [S1BN8-F]		3/4	3.42	8.67	76.8	0.60
										2/4	2.40	7.77	72.9	0.47
										1/4	1.44	7.28	61.0	0.30

motor data
8-poles
380 V
60 Hz
3~
G

motor type	motor rating P2 [hp]	max. temp. pumped media [°F]	speed nom. n _n [rpm]	FLA I _n [A]	LRA		cable size power + control cable			motor data				
					I _s [A]	NEMA code letter	Qty.	type	∅ min - max [in]	load	motor input [kW]	curr. I [A]	effec. [%]	power factor [-]
38UDG	4	104	855	8.17	29	E	1	AWG 15-12	0.65-0.69	4/4	3.77	8.17	79.2	0.70
								Rubber Cable		3/4	2.82	7.02	79.4	0.61
								[S1BN8-F]		2/4	1.94	6.15	76.8	0.48
										1/4	1.12	5.64	66.9	0.30
38XDG	4	104	855	8.17	29	E	1	AWG 15-12	0.65-0.69	4/4	3.77	8.17	79.2	0.70
								Rubber Cable		3/4	2.82	7.02	79.4	0.61
								[S1BN8-F]		2/4	1.94	6.15	76.8	0.48
										1/4	1.12	5.64	66.9	0.30
48UDG	6	104	840	12.0	36	C	1	AWG 15-12	0.65-0.69	4/4	5.84	12.0	76.6	0.74
								Rubber Cable		3/4	4.26	9.7	78.7	0.67
								[S1BN8-F]		2/4	2.87	8.2	77.9	0.53
										1/4	1.65	7.2	67.8	0.35
48XDG	6	104	840	12.0	36	C	1	AWG 15-12	0.65-0.69	4/4	5.84	12.0	76.6	0.74
								Rubber Cable		3/4	4.26	9.7	78.7	0.67
								[S1BN8-F]		2/4	2.87	8.2	77.9	0.53
										1/4	1.65	7.2	67.8	0.35

motor data
12-poles
380 V
60 Hz
3~
G

motor type	motor rating P2 [hp]	max. temp. pumped media [°F]	speed nom. n _n [rpm]	FLA I _n [A]	LRA		cable size power + control cable			motor data				
					I _s [A]	NEMA code letter	Qty.	type	∅ min - max [in]	load	motor input [kW]	curr. I [A]	effec. [%]	power factor [-]
612UDG	7.5	104	576	15.6	63	F	1	AWG 15-12	0.65-0.69	4/4	6.68	15.6	83.7	0.65
								Rubber Cable		3/4	5.03	13.2	83.4	0.58
								[S1BN8-F]		2/4	3.47	11.4	80.7	0.46
										1/4	1.95	10.2	71.8	0.29
612XDG	7.5	104	576	15.6	63	F	1	AWG 15-12	0.65-0.69	4/4	6.68	15.6	83.7	0.65
								Rubber Cable		3/4	5.03	13.2	83.4	0.58
								[S1BN8-F]		2/4	3.47	11.4	80.7	0.46
										1/4	1.95	10.2	71.8	0.29
1012UDG	15	104	572	31.1	97	D	1	AWG 11-7+15-5	0.83-0.91	4/4	13.5	31.1	82.8	0.66
								Rubber Cable		3/4	10.1	25.7	82.9	0.60
								[S1BN8-F]		2/4	6.9	21.3	81.3	0.49
										1/4	3.8	19.4	73.1	0.30
1012XDG	15	104	572	31.1	97	D	1	AWG 11-7+15-5	0.83-0.91	4/4	13.5	31.1	82.8	0.66
								Rubber Cable		3/4	10.1	25.7	82.9	0.60
								[S1BN8-F]		2/4	6.9	21.3	81.3	0.49
										1/4	3.8	19.4	73.1	0.30

motor data 4-poles 460 V 60 Hz 3~ G

motor type efficiency class	motor rating P2 [hp]	max. temp. pumped media [°F]	speed nom. n _n [rpm]	FLA I _n [A]	LRA		cable size power + control cable			motor data				
					I _s [A]	NEMA code letter	Qty.	type	∅ min - max [in]	load	motor input [kW]	curr. I [A]	effec. [%]	power factor [-]
14UDG	1.7	104	1715	2.66	13	G	1	AWG 15-7	0.52-0.57	4/4	1.66	2.66	76.6	0.78
-								Rubber Cable [S1BN8-F]		3/4	1.26	2.26	75.5	0.70
										2/4	0.87	1.98	73.2	0.55
										1/4	0.51	1.76	62.8	0.36
14XDG	1.7	104	1715	2.66	13	G	1	AWG 15-7	0.52-0.57	4/4	1.66	2.66	76.6	0.78
-								Rubber Cable [S1BN8-F]		3/4	1.26	2.26	75.5	0.70
										2/4	0.87	1.98	73.2	0.55
										1/4	0.51	1.76	62.8	0.36
24UDG	3.4	104	1695	5.00	21	E	1	AWG 15-7	0.52-0.57	4/4	3.22	5.00	78.7	0.81
-								Rubber Cable [S1BN8-F]		3/4	2.38	4.04	79.9	0.74
										2/4	1.63	3.41	77.7	0.60
										1/4	0.94	3.01	67.8	0.39
24XDG	3.4	104	1695	5.00	21	E	1	AWG 15-7	0.52-0.57	4/4	3.22	5.00	78.7	0.81
-								Rubber Cable [S1BN8-F]		3/4	2.38	4.04	79.9	0.74
										2/4	1.63	3.41	77.7	0.60
										1/4	0.94	3.01	67.8	0.39

motor data 6-poles 460 V 60 Hz 3~ G

motor type efficiency class	motor rating P2 [hp]	max. temp. pumped media [°F]	speed nom. n _n [rpm]	FLA I _n [A]	LRA		cable size power + control cable			motor data				
					I _s [A]	NEMA code letter	Qty.	type	∅ min - max [in]	load	motor input [kW]	curr. I [A]	effec. [%]	power factor [-]
06UDG	2.8	104	1150	4.74	21	G	1	AWG 15-7	0.52-0.57	4/4	2.61	4.74	80.1	0.69
-								Rubber Cable [S1BN8-F]		3/4	1.96	4.10	79.8	0.60
										2/4	1.37	3.67	76.0	0.47
										1/4	0.82	3.32	63.7	0.31
06XDG	2.8	104	1150	4.74	21	G	1	AWG 15-7	0.52-0.57	4/4	2.61	4.74	80.1	0.69
-								Rubber Cable [S1BN8-F]		3/4	1.96	4.10	79.8	0.60
										2/4	1.37	3.67	76.0	0.47
										1/4	0.82	3.32	63.7	0.31
26UDG	4.7	104	1140	8.17	30	F	1	AWG 15-7	0.52-0.57	4/4	4.56	8.17	76.9	0.70
-								Rubber Cable [S1BN8-F]		3/4	3.42	7.16	76.8	0.60
										2/4	2.40	6.42	72.9	0.47
										1/4	1.44	6.01	61.0	0.30
26XDG	4.7	104	1140	8.17	30	F	1	AWG 15-7	0.52-0.57	4/4	4.56	8.17	76.9	0.70
-								Rubber Cable [S1BN8-F]		3/4	3.42	7.16	76.8	0.60
										2/4	2.40	6.42	72.9	0.47
										1/4	1.44	6.01	61.0	0.30

motor data
8-poles
460 V
60 Hz
3~
G

motor type	motor rating P2 [hp]	max. temp. pumped media [°F]	speed nom. n _n [rpm]	FLA I _n [A]	LRA		cable size power + control cable			motor data				
					I _s [A]	NEMA code letter	Qty.	type	∅ min - max [in]	load	motor input [kW]	curr. I [A]	effec. [%]	power factor [-]
38UDG	4	104	855	6.75	24	E	1	AWG 15-12	0.65-0.69	4/4	3.77	6.75	79.2	0.70
								3/4		2.82	5.80	79.4	0.61	
								2/4		1.94	5.08	76.8	0.48	
								1/4		1.12	4.66	66.9	0.30	
38XDG	4	104	855	6.75	24	E	1	AWG 15-12	0.65-0.69	4/4	3.77	6.75	79.2	0.70
								3/4		2.82	5.80	79.4	0.61	
								2/4		1.94	5.08	76.8	0.48	
								1/4		1.12	4.66	66.9	0.30	
48UDG	6	104	840	9.91	30	C	1	AWG 15-12	0.65-0.69	4/4	5.84	9.91	76.6	0.74
								3/4		4.26	7.99	78.7	0.67	
								2/4		2.87	6.80	77.9	0.53	
								1/4		1.65	5.92	67.8	0.35	
48XDG	6	104	840	9.91	30	C	1	AWG 15-12	0.65-0.69	4/4	5.84	9.91	76.6	0.74
								3/4		4.26	7.99	78.7	0.67	
								2/4		2.87	6.80	77.9	0.53	
								1/4		1.65	5.92	67.8	0.35	

motor data
12-poles
460 V
60 Hz
3~
G

motor type	motor rating P2 [hp]	max. temp. pumped media [°F]	speed nom. n _n [rpm]	FLA I _n [A]	LRA		cable size power + control cable			motor data				
					I _s [A]	NEMA code letter	Qty.	type	∅ min - max [in]	load	motor input [kW]	curr. I [A]	effec. [%]	power factor [-]
612UDG	7.5	104	576	12.9	52	F	1	AWG 15-12	0.65-0.69	4/4	6.68	12.9	83.7	0.65
								3/4		5.03	10.9	83.4	0.58	
								2/4		3.47	9.5	80.7	0.46	
								1/4		1.95	8.4	71.8	0.29	
612XDG	7.5	104	576	12.9	52	F	1	AWG 15-12	0.65-0.69	4/4	6.68	12.9	83.7	0.65
								3/4		5.03	10.9	83.4	0.58	
								2/4		3.47	9.5	80.7	0.46	
								1/4		1.95	8.4	71.8	0.29	
1012UDG	15	104	572	25.7	80	D	1	AWG 11-7+15-5	0.83-0.91	4/4	13.5	25.7	82.8	0.66
								3/4		10.1	21.2	82.9	0.60	
								2/4		6.9	17.6	81.3	0.49	
								1/4		3.8	16.0	73.1	0.30	
1012XDG	15	104	572	25.7	80	D	1	AWG 11-7+15-5	0.83-0.91	4/4	13.5	25.7	82.8	0.66
								3/4		10.1	21.2	82.9	0.60	
								2/4		6.9	17.6	81.3	0.49	
								1/4		3.8	16.0	73.1	0.30	

motor data 4-poles 575 V 60 Hz 3~ **G**

motor type efficiency class	motor rating P2 [hp]	max. temp. pumped media [°F]	speed nom. n _n [rpm]	FLA I _n [A]	LRA		cable size power + control cable			motor data				
					I _s [A]	NEMA code letter	Qty.	type	∅ min - max [mm]	load	motor input [kW]	curr. I [A]	effec. [%]	power factor [-]
14UDG	1.7	104	1715	2.13	10	G	1	AWG 16-7	13.2-14.4	4/4	1.66	2.13	76.6	0.78
-								Rubber Cable [S1BN8-F]		3/4	1.26	1.81	75.5	0.70
										2/4	0.87	1.58	73.2	0.55
										1/4	0.51	1.41	62.8	0.36
14XDG	1.7	104	1715	2.13	10	G	1	AWG 16-7	13.2-14.4	4/4	1.66	2.13	76.6	0.78
-								Rubber Cable [S1BN8-F]		3/4	1.26	1.81	75.5	0.70
										2/4	0.87	1.58	73.2	0.55
										1/4	0.51	1.41	62.8	0.36
24UDG	3.4	104	1695	4.00	17	E	1	AWG 16-7	13.2-14.4	4/4	3.22	4.00	78.7	0.81
-								Rubber Cable [S1BN8-F]		3/4	2.38	3.23	79.9	0.74
										2/4	1.63	2.73	77.7	0.60
										1/4	0.94	2.41	67.8	0.39
24XDG	3.4	104	1695	4.00	17	E	1	AWG 16-7	13.2-14.4	4/4	3.22	4.00	78.7	0.81
-								Rubber Cable [S1BN8-F]		3/4	2.38	3.23	79.9	0.74
										2/4	1.63	2.73	77.7	0.60
										1/4	0.94	2.41	67.8	0.39

motor data 6-poles 575 V 60 Hz 3~ **G**

motor type efficiency class	motor rating P2 [hp]	max. temp. pumped media [°F]	speed nom. n _n [rpm]	FLA I _n [A]	LRA		cable size power + control cable			motor data				
					I _s [A]	NEMA code letter	Qty.	type	∅ min - max [mm]	load	motor input [kW]	curr. I [A]	effec. [%]	power factor [-]
06UDG	2.8	104	1150	3.79	17	G	1	AWG 16-7	13.2-14.4	4/4	2.61	3.79	80.1	0.69
-								Rubber Cable [S1BN8-F]		3/4	1.96	3.28	79.8	0.60
										2/4	1.37	2.94	76.0	0.47
										1/4	0.82	2.66	63.7	0.31
06XDG	2.8	104	1150	3.79	17	G	1	AWG 16-7	13.2-14.4	4/4	2.61	3.79	80.1	0.69
-								Rubber Cable [S1BN8-F]		3/4	1.96	3.28	79.8	0.60
										2/4	1.37	2.94	76.0	0.47
										1/4	0.82	2.66	63.7	0.31
26UDG	4.7	104	1140	6.54	24	F	1	AWG 16-7	13.2-14.4	4/4	4.56	6.54	76.9	0.70
-								Rubber Cable [S1BN8-F]		3/4	3.42	5.73	76.8	0.60
										2/4	2.40	5.14	72.9	0.47
										1/4	1.44	4.81	61.0	0.30
26XDG	4.7	104	1140	6.54	24	F	1	AWG 16-7	13.2-14.4	4/4	4.56	6.54	76.9	0.70
-								Rubber Cable [S1BN8-F]		3/4	3.42	5.73	76.8	0.60
										2/4	2.40	5.14	72.9	0.47
										1/4	1.44	4.81	61.0	0.30

motor data
8-poles
575 V
60 Hz
3~
G

motor type	motor rating P2 [hp]	max. temp. pumped media [°F]	speed nom. n _n [rpm]	FLA I _n [A]	LRA		cable size power + control cable			motor data				
					I _s [A]	NEMA code letter	Qty.	type	∅ min - max [mm]	load	motor input [kW]	curr. I [A]	effec. [%]	power factor [-]
38UDG	4	104	855	5.40	19	E	1	AWG 16-12	16.6-17.6	4/4	3.77	5.40	79.2	0.70
								3/4		2.82	4.64	79.4	0.61	
								2/4		1.94	4.06	76.8	0.48	
								1/4		1.12	3.73	66.9	0.30	
38XDG	4	104	855	5.40	19	E	1	AWG 16-12	16.6-17.6	4/4	3.77	5.40	79.2	0.70
								3/4		2.82	4.64	79.4	0.61	
								2/4		1.94	4.06	76.8	0.48	
								1/4		1.12	3.73	66.9	0.30	
48UDG	6	104	840	7.93	24	C	1	AWG 16-12	16.6-17.6	4/4	5.84	7.93	76.6	0.74
								3/4		4.26	6.39	78.7	0.67	
								2/4		2.87	5.44	77.9	0.53	
								1/4		1.65	4.73	67.8	0.35	
48XDG	6	104	840	7.93	24	C	1	AWG 16-12	16.6-17.6	4/4	5.84	7.93	76.6	0.74
								3/4		4.26	6.39	78.7	0.67	
								2/4		2.87	5.44	77.9	0.53	
								1/4		1.65	4.73	67.8	0.35	

motor data
12-poles
575 V
60 Hz
3~
G

motor type	motor rating P2 [hp]	max. temp. pumped media [°F]	speed nom. n _n [rpm]	FLA I _n [A]	LRA		cable size power + control cable			motor data				
					I _s [A]	NEMA code letter	Qty.	type	∅ min - max [mm]	load	motor input [kW]	curr. I [A]	effec. [%]	power factor [-]
612UDG	7.5	104	576	10.3	41	F	1	AWG 16-12	16.6-17.6	4/4	6.68	10.3	83.7	0.65
								3/4		5.03	8.7	83.4	0.58	
								2/4		3.47	7.6	80.7	0.46	
								1/4		1.95	6.7	71.8	0.29	
612XDG	7.5	104	576	10.3	41	F	1	AWG 16-12	16.6-17.6	4/4	6.68	10.3	83.7	0.65
								3/4		5.03	8.7	83.4	0.58	
								2/4		3.47	7.6	80.7	0.46	
								1/4		1.95	6.7	71.8	0.29	
1012UDG	15	104	572	20.6	64	D	1	AWG 14-12	18.5-19.5	4/4	13.5	20.6	82.8	0.66
								3/4		10.1	16.9	82.9	0.60	
								2/4		6.9	14.1	81.3	0.49	
								1/4		3.8	12.8	73.1	0.30	
1012XDG	15	104	572	20.6	64	D	1	AWG 14-12	18.5-19.5	4/4	13.5	20.6	82.8	0.66
								3/4		10.1	16.9	82.9	0.60	
								2/4		6.9	14.1	81.3	0.49	
								1/4		3.8	12.8	73.1	0.30	

motor data 4-poles 380 V 60 Hz 3~ C

motor type efficiency class	motor rating P2 [hp]	max. temp. pum- ped media [°F]	speed nom. n _n [rpm]	FLA I _n [A]	LRA		cable size power + control cable			motor data				
					I _s [A]	NEMA code letter	Qty.	type	∅ min - max [in]	load	motor input [kW]	curr. I [A]	effec. [%]	power factor [-]
14UDC	1.7	104	1715	3.22	16	G	1	AWG 15-8	0.56-0.60	4/4	1.66	3.22	76.6	0.78
-								Rubber Cable [S1BN8-F]		3/4	1.26	2.74	75.5	0.70
										2/4	0.87	2.40	73.2	0.55
										1/4	0.51	2.13	62.8	0.36
14XDC	1.7	104	1715	3.22	16	G	1	AWG 15-8	0.56-0.60	4/4	1.66	3.22	76.6	0.78
-								Rubber Cable [S1BN8-F]		3/4	1.26	2.74	75.5	0.70
										2/4	0.87	2.40	73.2	0.55
										1/4	0.51	2.13	62.8	0.36
24UDC	3.4	104	1695	6.05	25	E	1	AWG 15-8	0.56-0.60	4/4	3.22	6.05	78.7	0.81
-								Rubber Cable [S1BN8-F]		3/4	2.38	4.89	79.9	0.74
										2/4	1.63	4.13	77.7	0.60
										1/4	0.94	3.64	67.8	0.39
24XDC	3.4	104	1695	6.05	25	E	1	AWG 15-8	0.56-0.60	4/4	3.22	6.05	78.7	0.81
-								Rubber Cable [S1BN8-F]		3/4	2.38	4.89	79.9	0.74
										2/4	1.63	4.13	77.7	0.60
										1/4	0.94	3.64	67.8	0.39

motor data 6-poles 380 V 60 Hz 3~ C

motor type efficiency class	motor rating P2 [hp]	max. temp. pum- ped media [°F]	speed nom. n _n [rpm]	FLA I _n [A]	LRA		cable size power + control cable			motor data				
					I _s [A]	NEMA code letter	Qty.	type	∅ min - max [in]	load	motor input [kW]	curr. I [A]	effec. [%]	power factor [-]
06UDC	2.8	104	1150	5.74	25	G	1	AWG 15-8	0.56-0.60	4/4	2.61	5.74	80.1	0.69
-								Rubber Cable [S1BN8-F]		3/4	1.96	4.96	79.8	0.60
										2/4	1.37	4.44	76.0	0.47
										1/4	0.82	4.02	63.7	0.31
06XDC	2.8	104	1150	5.74	25	G	1	AWG 15-8	0.56-0.60	4/4	2.61	5.74	80.1	0.69
-								Rubber Cable [S1BN8-F]		3/4	1.96	4.96	79.8	0.60
										2/4	1.37	4.44	76.0	0.47
										1/4	0.82	4.02	63.7	0.31
26UDC	4.7	104	1140	9.89	36	F	1	AWG 15-8	0.56-0.60	4/4	4.56	9.89	76.9	0.70
-								Rubber Cable [S1BN8-F]		3/4	3.42	8.67	76.8	0.60
										2/4	2.40	7.77	72.9	0.47
										1/4	1.44	7.28	61.0	0.30
26XDC	4.7	104	1140	9.89	36	F	1	AWG 15-8	0.56-0.60	4/4	4.56	9.89	76.9	0.70
-								Rubber Cable [S1BN8-F]		3/4	3.42	8.67	76.8	0.60
										2/4	2.40	7.77	72.9	0.47
										1/4	1.44	7.28	61.0	0.30

motor data
8-poles
380 V
60 Hz
3~
C

motor type	motor rating P2 [hp]	max. temp. pumped media [°F]	speed nom. n _n [rpm]	FLA I _n [A]	LRA		cable size power + control cable			motor data				
					I _s [A]	NEMA code letter	Qty.	type	∅ min - max [in]	load	motor input [kW]	curr. I [A]	effec. [%]	power factor [-]
38UDC	4	104	855	8.17	29	E	1	AWG 13-12	0.73-0.77	4/4	3.77	8.17	79.2	0.70
								3/4		2.82	7.02	79.4	0.61	
								2/4		1.94	6.15	76.8	0.48	
								1/4		1.12	5.64	66.9	0.30	
38XDC	4	104	855	8.17	29	E	1	AWG 13-12	0.73-0.77	4/4	3.77	8.17	79.2	0.70
								3/4		2.82	7.02	79.4	0.61	
								2/4		1.94	6.15	76.8	0.48	
								1/4		1.12	5.64	66.9	0.30	
48UDC	6	104	840	12.0	36	C	1	AWG 13-12	0.73-0.77	4/4	5.84	12.0	76.6	0.74
								3/4		4.26	9.7	78.7	0.67	
								2/4		2.87	8.2	77.9	0.53	
								1/4		1.65	7.2	67.8	0.35	
48XDC	6	104	840	12.0	36	C	1	AWG 13-12	0.73-0.77	4/4	5.84	12.0	76.6	0.74
								3/4		4.26	9.7	78.7	0.67	
								2/4		2.87	8.2	77.9	0.53	
								1/4		1.65	7.2	67.8	0.35	

motor data
12-poles
380 V
60 Hz
3~
C

motor type	motor rating P2 [hp]	max. temp. pumped media [°F]	speed nom. n _n [rpm]	FLA I _n [A]	LRA		cable size power + control cable			motor data				
					I _s [A]	NEMA code letter	Qty.	type	∅ min - max [in]	load	motor input [kW]	curr. I [A]	effec. [%]	power factor [-]
412UMC	7.5	104	572	19.6	61	F	1	AWG 13-12	0.73-0.77	4/4	7.50	19.6	74.6	0.58
								3/4		5.70	17.7	73.6	0.49	
								2/4		4.04	16.1	69.3	0.38	
								1/4		2.51	15.3	55.8	0.25	
812UMC	15	104	580	47.1	136	G	1	AWG 7-7+15-5	0.96-1.08	4/4	15.5	47.1	72.2	0.50
								3/4		12.0	43.5	69.8	0.42	
								2/4		8.8	41.6	63.8	0.32	
								1/4		5.7	39.5	48.9	0.22	

motor data 4-poles 460 V 60 Hz 3~ C

motor type efficiency class	motor rating P2 [hp]	max. temp. pumped media [°F]	speed nom. n _n [rpm]	FLA I _n [A]	LRA		cable size power + control cable			motor data				
					I _s [A]	NEMA code letter	Qty.	type	∅ min - max [in]	load	motor input [kW]	curr. I [A]	effec. [%]	power factor [-]
14UDC	1.7	104	1715	2.66	13	G	1	AWG 15-8	0.56-0.60	4/4	1.66	2.66	76.6	0.78
-								Rubber Cable [S1BN8-F]		3/4	1.26	2.26	75.5	0.70
										2/4	0.87	1.98	73.2	0.55
										1/4	0.51	1.76	62.8	0.36
14XDC	1.7	104	1715	2.66	13	G	1	AWG 15-8	0.56-0.60	4/4	1.66	2.66	76.6	0.78
-								Rubber Cable [S1BN8-F]		3/4	1.26	2.26	75.5	0.70
										2/4	0.87	1.98	73.2	0.55
										1/4	0.51	1.76	62.8	0.36
24UDC	3.4	104	1695	5.00	21	E	1	AWG 15-8	0.56-0.60	4/4	3.22	5.00	78.7	0.81
-								Rubber Cable [S1BN8-F]		3/4	2.38	4.04	79.9	0.74
										2/4	1.63	3.41	77.7	0.60
										1/4	0.94	3.01	67.8	0.39
24XDC	3.4	104	1695	5.00	21	E	1	AWG 15-8	0.56-0.60	4/4	3.22	5.00	78.7	0.81
-								Rubber Cable [S1BN8-F]		3/4	2.38	4.04	79.9	0.74
										2/4	1.63	3.41	77.7	0.60
										1/4	0.94	3.01	67.8	0.39

motor data 6-poles 460 V 60 Hz 3~ C

motor type efficiency class	motor rating P2 [hp]	max. temp. pumped media [°F]	speed nom. n _n [rpm]	FLA I _n [A]	LRA		cable size power + control cable			motor data				
					I _s [A]	NEMA code letter	Qty.	type	∅ min - max [in]	load	motor input [kW]	curr. I [A]	effec. [%]	power factor [-]
06UDC	2.8	104	1150	4.74	21	G	1	AWG 15-8	0.56-0.60	4/4	2.61	4.74	80.1	0.69
-								Rubber Cable [S1BN8-F]		3/4	1.96	4.10	79.8	0.60
										2/4	1.37	3.67	76.0	0.47
										1/4	0.82	3.32	63.7	0.31
06XDC	2.8	104	1150	4.74	21	G	1	AWG 15-8	0.56-0.60	4/4	2.61	4.74	80.1	0.69
-								Rubber Cable [S1BN8-F]		3/4	1.96	4.10	79.8	0.60
										2/4	1.37	3.67	76.0	0.47
										1/4	0.82	3.32	63.7	0.31
26UDC	4.7	104	1140	8.17	30	F	1	AWG 15-8	0.56-0.60	4/4	4.56	8.17	76.9	0.70
-								Rubber Cable [S1BN8-F]		3/4	3.42	7.16	76.8	0.60
										2/4	2.40	6.42	72.9	0.47
										1/4	1.44	6.01	61.0	0.30
26XDC	4.7	104	1140	8.17	30	F	1	AWG 15-8	0.56-0.60	4/4	4.56	8.17	76.9	0.70
-								Rubber Cable [S1BN8-F]		3/4	3.42	7.16	76.8	0.60
										2/4	2.40	6.42	72.9	0.47
										1/4	1.44	6.01	61.0	0.30

motor data
8-poles
460 V
60 Hz
3~
C

motor type	motor rating P2 [hp]	max. temp. pumped media [°F]	speed nom. n _n [rpm]	FLA I _n [A]	LRA		cable size power + control cable			motor data				
					I _s [A]	NEMA code letter	Qty.	type	∅ min - max [in]	load	motor input [kW]	curr. I [A]	effec. [%]	power factor [-]
38UDC	4	104	855	6.75	24	E	1	AWG 13-12	0.73-0.77	4/4	3.77	6.75	79.2	0.70
								3/4		2.82	5.80	79.4	0.61	
								2/4		1.94	5.08	76.8	0.48	
								1/4		1.12	4.66	66.9	0.30	
38XDC	4	104	855	6.75	24	E	1	AWG 13-12	0.73-0.77	4/4	3.77	6.75	79.2	0.70
								3/4		2.82	5.80	79.4	0.61	
								2/4		1.94	5.08	76.8	0.48	
								1/4		1.12	4.66	66.9	0.30	
48UDC	6	104	840	9.91	30	C	1	AWG 13-12	0.73-0.77	4/4	5.84	9.91	76.6	0.74
								3/4		4.26	7.99	78.7	0.67	
								2/4		2.87	6.80	77.9	0.53	
								1/4		1.65	5.92	67.8	0.35	
48XDC	6	104	840	9.91	30	C	1	AWG 13-12	0.73-0.77	4/4	5.84	9.91	76.6	0.74
								3/4		4.26	7.99	78.7	0.67	
								2/4		2.87	6.80	77.9	0.53	
								1/4		1.46	5.24	76.6	0.35	

motor data
12-poles
460 V
60 Hz
3~
C

motor type	motor rating P2 [hp]	max. temp. pumped media [°F]	speed nom. n _n [rpm]	FLA I _n [A]	LRA		cable size power + control cable			motor data				
					I _s [A]	NEMA code letter	Qty.	type	∅ min - max [in]	load	motor input [kW]	curr. I [A]	effec. [%]	power factor [-]
412UMC	7.5	104	572	16.2	50	F	1	AWG 13-12	0.73-0.77	4/4	7.50	16.2	74.6	0.58
								3/4		5.70	14.6	73.6	0.49	
								2/4		4.04	13.3	69.3	0.38	
								1/4		2.51	12.6	55.8	0.25	
812UMC	15	104	580	38.9	112	G	1	AWG 9-7+15-5	0.94-1.06	4/4	15.5	38.9	72.2	0.50
								3/4		12.0	35.9	69.8	0.42	
								2/4		8.8	34.4	63.8	0.32	
								1/4		5.7	32.6	48.9	0.22	

motor data 4-poles 575 V 60 Hz 3~ C

motor type efficiency class	motor rating P2 [hp]	max. temp. pumped media [°F]	speed nom. n _n [rpm]	FLA I _n [A]	LRA		cable size power + control cable			motor data				
					I _s [A]	NEMA code letter	Qty.	type	∅ min - max [mm]	load	motor input [kW]	curr. I [A]	effec. [%]	power factor [-]
14UDC	1.7	104	1715	2.13	10	G	1	AWG 16-8	14.3-15.3	4/4	1.66	2.13	76.6	0.78
-								Rubber Cable [S1BN8-F]		3/4	1.26	1.81	75.5	0.70
										2/4	0.87	1.58	73.2	0.55
										1/4	0.51	1.41	62.8	0.36
14XDC	1.7	104	1715	2.13	10	G	1	AWG 16-8	14.3-15.3	4/4	1.66	2.13	76.6	0.78
-								Rubber Cable [S1BN8-F]		3/4	1.26	1.81	75.5	0.70
										2/4	0.87	1.58	73.2	0.55
										1/4	0.51	1.41	62.8	0.36
24UDC	3.4	104	1695	4.00	17	E	1	AWG 16-8	14.3-15.3	4/4	3.22	4.00	78.7	0.81
-								Rubber Cable [S1BN8-F]		3/4	2.38	3.23	79.9	0.74
										2/4	1.63	2.73	77.7	0.60
										1/4	0.94	2.41	67.8	0.39
24XDC	3.4	104	1695	4.00	17	E	1	AWG 16-8	14.3-15.3	4/4	3.22	4.00	78.7	0.81
-								Rubber Cable [S1BN8-F]		3/4	2.38	3.23	79.9	0.74
										2/4	1.63	2.73	77.7	0.60
										1/4	0.94	2.41	67.8	0.39

motor data 6-poles 575 V 60 Hz 3~ C

motor type efficiency class	motor rating P2 [hp]	max. temp. pumped media [°F]	speed nom. n _n [rpm]	FLA I _n [A]	LRA		cable size power + control cable			motor data				
					I _s [A]	NEMA code letter	Qty.	type	∅ min - max [mm]	load	motor input [kW]	curr. I [A]	effec. [%]	power factor [-]
06UDC	2.8	104	1150	3.79	17	G	1	AWG 16-8	14.3-15.3	4/4	2.61	3.79	80.1	0.69
-								Rubber Cable [S1BN8-F]		3/4	1.96	3.28	79.8	0.60
										2/4	1.37	2.94	76.0	0.47
										1/4	0.82	2.66	63.7	0.31
06XDC	2.8	104	1150	3.79	17	G	1	AWG 16-8	14.3-15.3	4/4	2.61	3.79	80.1	0.69
-								Rubber Cable [S1BN8-F]		3/4	1.96	3.28	79.8	0.60
										2/4	1.37	2.94	76.0	0.47
										1/4	0.82	2.66	63.7	0.31
26UDC	4.7	104	1140	6.54	24	F	1	AWG 16-8	14.3-15.3	4/4	4.56	6.54	76.9	0.70
-								Rubber Cable [S1BN8-F]		3/4	3.42	5.73	76.8	0.60
										2/4	2.40	5.14	72.9	0.47
										1/4	1.44	4.81	61.0	0.30
26XDC	4.7	104	1140	6.54	24	F	1	AWG 16-8	14.3-15.3	4/4	4.56	6.54	76.9	0.70
-								Rubber Cable [S1BN8-F]		3/4	3.42	5.73	76.8	0.60
										2/4	2.40	5.14	72.9	0.47
										1/4	1.44	4.81	61.0	0.30

motor data
8-poles
575 V
60 Hz
3~
C

motor type	motor rating P2 [hp]	max. temp. pumped media [°F]	speed nom. n _n [rpm]	FLA I _n [A]	LRA		cable size power + control cable			motor data				
					I _s [A]	NEMA code letter	Qty.	type	∅ min - max [mm]	load	motor input [kW]	curr. I [A]	effec. [%]	power factor [-]
38UDC	4	104	855	5.40	19	E	1	AWG 14-12	18.5-19.5	4/4	3.77	5.40	79.2	0.70
								3/4		2.82	4.64	79.4	0.61	
								2/4		1.94	4.06	76.8	0.48	
								1/4		1.12	3.73	66.9	0.30	
38XDC	4	104	855	5.40	19	E	1	AWG 14-12	18.5-19.5	4/4	3.77	5.40	79.2	0.70
								3/4		2.82	4.64	79.4	0.61	
								2/4		1.94	4.06	76.8	0.48	
								1/4		1.12	3.73	66.9	0.30	
48UDC	6	104	840	7.93	24	C	1	AWG 14-12	18.5-19.5	4/4	5.84	7.93	76.6	0.74
								3/4		4.26	6.39	78.7	0.67	
								2/4		2.87	5.44	77.9	0.53	
								1/4		1.65	4.73	67.8	0.35	
48XDC	6	104	840	7.93	24	C	1	AWG 14-12	18.5-19.5	4/4	5.84	7.93	76.6	0.74
								3/4		4.26	6.39	78.7	0.67	
								2/4		2.87	5.44	77.9	0.53	
								1/4		1.46	4.19	76.6	0.35	



KSB, Inc.
4415 Sarellen Road · Richmond, VA23231
Phone: (804) 222-1818 · Fax: (804) 226-6961 · www.ksb-inc.com

KSB Pumps Inc
5885 Kennedy Road · Mississauga · Ontario L4Z 2G3
Phone: (905) 568-9200 · Fax: (905) 568-3740 · www.ksb.ca